

# **Guidelines of Implementation**

**EDIFACT SUBSET**

**EDITEC**

**ORDERS**



**ORDERS**

**Version 4.0**

# Table of contents

---

Introduction.....3

Instructions for usage .....4

Message structure.....5

Message structure diagram .....7

Segment descriptions .....11

    Comprehensive example.....57

Example messages .....57

    Detailed examples.....57

# Introduction

---

This EDIFACT subset "Inventory Report" has been prepared by ITEK on behalf of the Arbeitsgemeinschaft Neue Medien der deutschen Sanitärindustrie e.V. and the Deutscher Großhandelsverband Haustechnik e.V.

With the EDIFACT subset ORDERS, the order data of the wholesale trade are transferred to the manufacturer in a swift, safe and cost-effective manner. This subset description and these guidelines of implementation normalize and standardize the process of electronic order data transfer from the trade to the industry.

By means of the harmonized use of the order data on the part of the wholesale trade, and by the harmonized processing of this data on the part of the industry, the necessary process reliability is provided for both sender and recipient.

The individual guidelines of implementation are given at the end of each segment and are highlighted in colour. By observing these guidelines of implementation, you will achieve the harmonized processing of your order data by the industry, and the necessary order process reliability. For this reason, the consistent use of the order data as defined in the guidelines of implementation is mandatory for the harmonized processing of your orders on the part of the suppliers.

ITEK  
Technologiepark 13  
33100 Paderborn

Phone no.: +49 52 51 16 14 –0  
Facsimile no.: +49 52 51 16 14 –99  
E-mail: editec@itekgbh.de

The EDIFACT subset is based on the EDIFACT syntax version 3 and the following public documents:

- EDIFACT – Standardized message type "ORDERS"
- UN/EDIFACT Directory 96B, UN/ECE/TRADE/WP.4
- EDIFACT - Service Segments Application Guidelines, Draft DIN 16560 - Part 1, February 1994
- UN/EDIFACT code list D.97A

Paderborn, June 2015

# Instructions for usage

Maximal number of repetitions possible (the mandatory field always refers to the segment and not to the maximal rate of repetitions)

| Nummer   | Nr | Segment    | St | MaxWdh. | Ebene | Name    |
|--|----|------------|----|---------|-------|---------|
| 0210   |    | <b>SG5</b> | C  | 1       | 2     | CTA-COM |
| Diese Segmentgruppe enthält das CTA-Segment zur Angabe eines Ansprechpartners. |    |            |    |         |       |         |

|      |    |            |   |   |   |                       |
|------|----|------------|---|---|---|-----------------------|
| 0220 | 19 | <b>CTA</b> | M | 1 | 2 | Kommunikationspartner |
|------|----|------------|---|---|---|-----------------------|

Segment identifier

Segment status  
(M=Mandatory/C=Conditional)

Segment name

Data element identifier

|      |  |   |  |                               |
|------|--|---|--|-------------------------------|
| 3139 |  | N |  | Wird im Subset nicht benutzt. |
|------|--|---|--|-------------------------------|

This is a data element which is not used in the subset. Yet it is positioned either as a data element on data element group level or within a data element group between two data elements used in the subset. At the stage of the implementation, these data elements do not have to be taken into account.

Data element group identifier

Data element group name

Data element group status

|      |                                       |   |  |                               |
|------|---------------------------------------|---|--|-------------------------------|
| C056 | ABTEILUNGS- ODER<br>BEARBEITERANGABEN | C |  |                               |
| 3413 |                                       | N |  | Wird im Subset nicht benutzt. |

Data element identifier  
in a data element  
group

Data element  
name

Data element  
status

|      |                           |          |  |                           |
|------|---------------------------|----------|--|---------------------------|
| 3412 | Abteilung oder Bearbeiter | C an..35 |  | Name des Sachbearbeiters. |
|------|---------------------------|----------|--|---------------------------|

Alphanumeric with a maximum length of 35 characters; at fixed length the dots “..” are omitted; also: a=alphabetic and n=numeric.

Details on the usage of  
particular elements in the  
subset

# Message structure

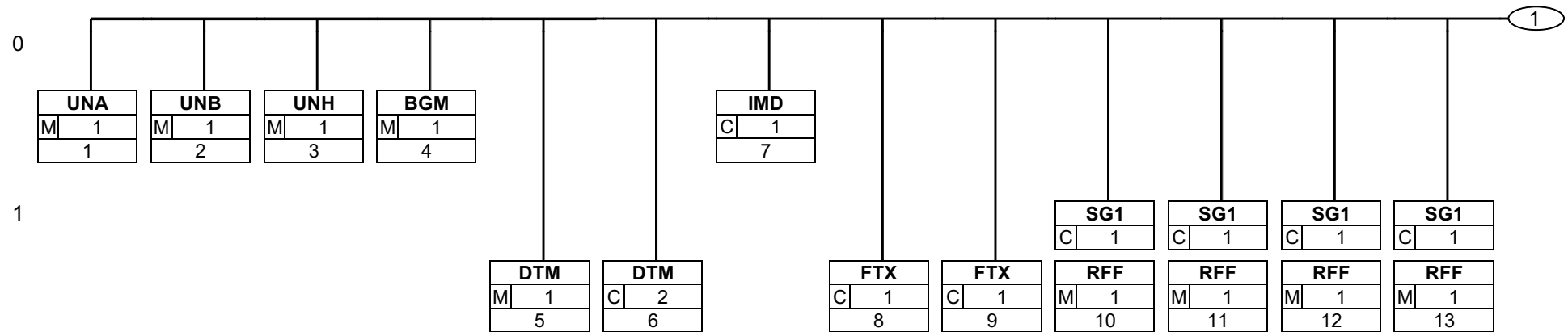
|      |    |   |      |   |
|------|----|---|------|---|
| UNA  | 1  | M | 1    | - Separator default   |
| UNB  | 2  | M | 1    | - User data head segment  |
| UNH  | 3  | M | 1    | - Message header  |
| BGM  | 4  | M | 1    | - Beginning of message  |
| DTM  | 5  | M | 1    | - Order date  |
| DTM  | 6  | C | 2    | - Requested delivery date/time  |
| IMD  | 7  | C | 1    | - Description of the message  |
| FTX  | 8  | C | 1    | - Additional text referring to the order                              |
| FTX  | 9  | C | 1    | - Notification text   |
| SG1  |    | C | 1    | - Supplier's transaction/object/project/blanket purchase order number |
| RFF  | 10 | M | 1    | - Reference data  |
| SG1  |    | C | 1    | - Object number wholesale/trade                                       |
| RFF  | 11 | M | 1    | - Reference data  |
| SG1  |    | C | 1    | - Object description (characters 1-30)                                |
| RFF  | 12 | M | 1    | - Reference data  |
| SG1  |    | C | 1    | - Object description (characters 31-60)                               |
| RFF  | 13 | M | 1    | - Reference data  |
| SG1  |    | C | 1    | - Collective order number   |
| RFF  | 14 | M | 1    | - Reference data  |
| SG2  |    | C | 1    | - Supplier  |
| NAD  | 15 | M | 1    | - Name and address  |
| SG5  |    | C | 1    | - CTA-COM   |
| CTA  | 16 | M | 1    | - Communication partner   |
| COM  | 17 | C | 3    | - Communication link  |
| SG2  |    | C | 1    | - Wholesaler  |
| NAD  | 18 | M | 1    | - Name and address  |
| SG5  |    | C | 1    | - CTA-COM   |
| CTA  | 19 | M | 1    | - Communication partner   |
| COM  | 20 | C | 3    | - Communication link  |
| SG2  |    | C | 1    | - Shipping address  |
| NAD  | 21 | M | 1    | - Name and address  |
| SG5  |    | C | 1    | - CTA-COM   |
| CTA  | 22 | M | 1    | - Communication partner   |
| COM  | 23 | C | 3    | - Communication link  |
| SG2  |    | C | 1    | - Consignee   |
| NAD  | 24 | M | 1    | - Name and address  |
| SG5  |    | C | 1    | - CTA-COM   |
| CTA  | 25 | M | 1    | - Communication partner   |
| COM  | 26 | C | 3    | - Communication link  |
| SG7  |    | C | 1    | - CUX   |
| CUX  | 27 | M | 1    | - Currency information  |
| SG18 |    | C | 2    | - ALC-SG20-SG21   |
| ALC  | 28 | M | 1    | - Allowances and charges  |
| SG20 |    | C | 1    | - PCD   |
| PCD  | 29 | M | 1    | - Percentages   |
| SG21 |    | C | 1    | - MOA   |
| MOA  | 30 | M | 1    | - Amount  |
| SG25 |    | C | 9999 | - LIN-PIA-IMD-IMD-IMD-IMD-QTY-DTM-SG28-SG29-SG39                      |
| LIN  | 31 | M | 1    | - Line item data  |
| PIA  | 32 | C | 1    | - Generated variant article number                                    |
| IMD  | 33 | C | 2    | - Article specification   |
| IMD  | 34 | C | 8    | - Additional text referring to the line item                          |
| IMD  | 35 | C | 10   | - Generated text referring to the article                             |
| IMD  | 36 | C | 79   | - List of characteristics   |
| QTY  | 37 | M | 1    | - Quantity  |

# Message structure

---

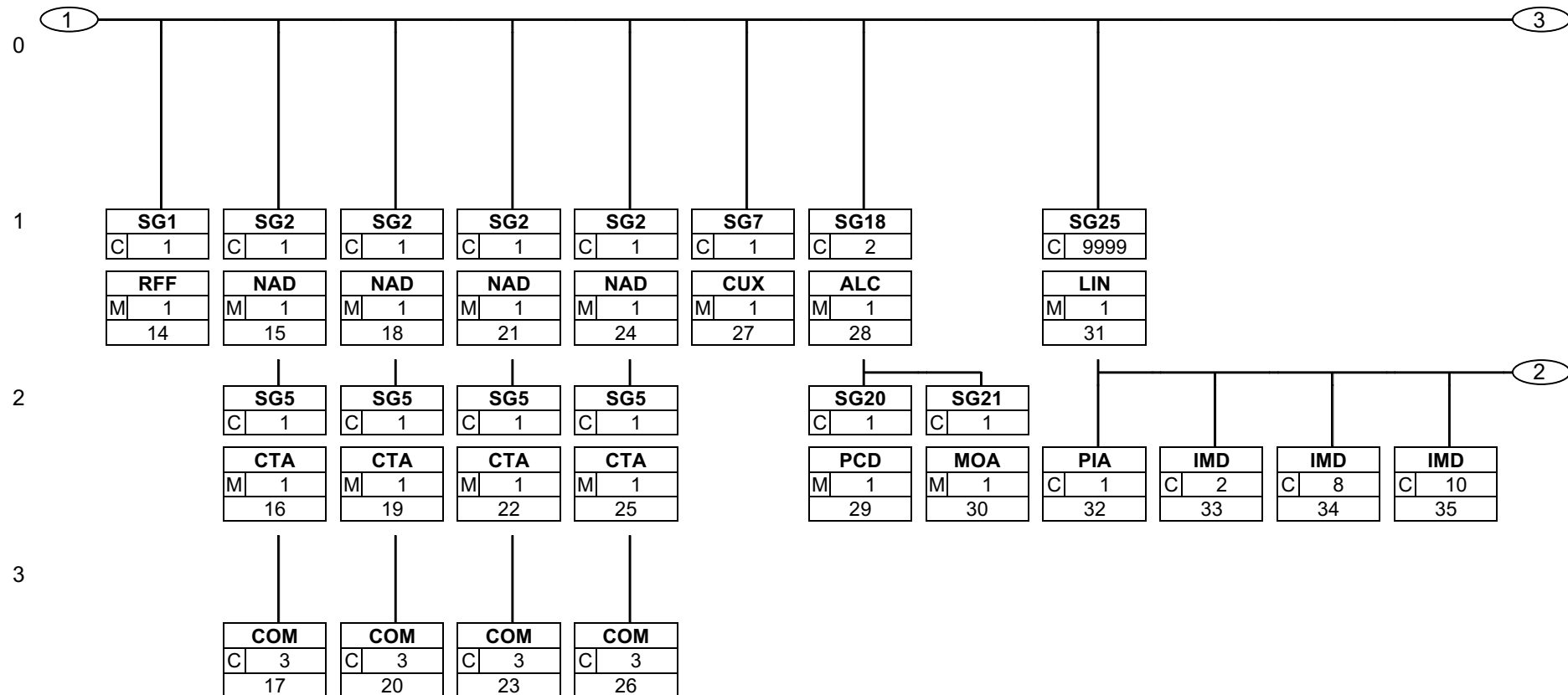
|        |    |   |   |                           |
|--------|----|---|---|---------------------------|
| DTM    | 38 | C | 2 | - Date/time/period data   |
| └─SG28 |    | C | 1 | - PRI                     |
| └─PRI  | 39 | M | 1 | - Price information       |
| └─SG29 |    | C | 2 | - RFF                     |
| └─RFF  | 40 | M | 1 | - Reference data          |
| └─SG39 |    | C | 2 | - ALC-SG41-SG42           |
| └─ALC  | 41 | M | 1 | - Allowances and charges  |
| └─SG41 |    | C | 1 | - PCD                     |
| └─PCD  | 42 | M | 1 | - Percentages             |
| └─SG42 |    | C | 1 | - MOA                     |
| └─MOA  | 43 | M | 1 | - Amount                  |
| UNS    | 44 | M | 1 | - Section control segment |
| UNT    | 45 | M | 1 | - Message end segment     |
| UNZ    | 46 | M | 1 | - User data end segment   |

# Message structure diagram



Status: M=Mandatory, C=Conditional, R=Required, O=Optional, D=Dependent, A=Advised, N=Not used, X=Not used

# Message structure diagram

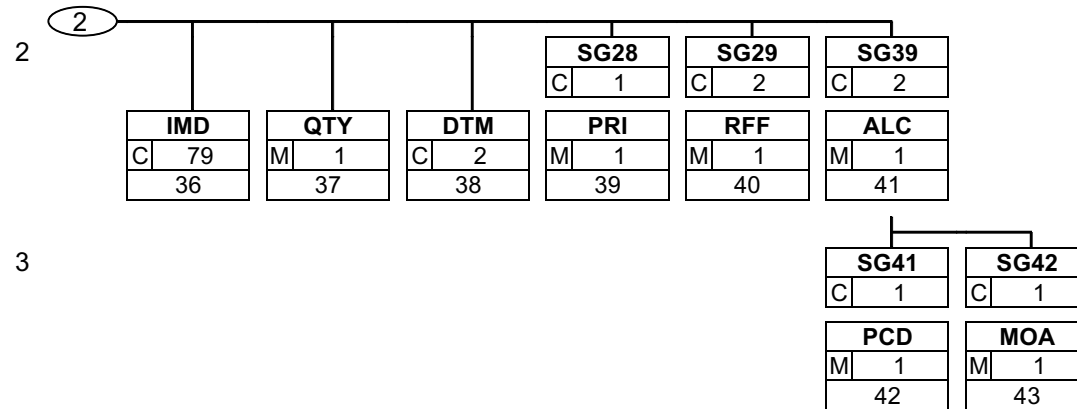


Status: M=Mandatory, C=Conditional, R=Required, O=Optional, D=Dependent, A=Advised, N=Not used, X=Not used



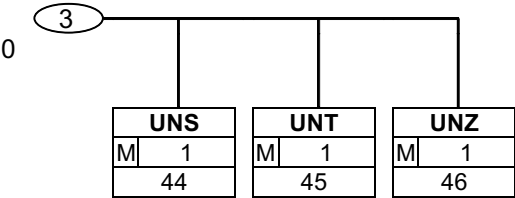
## Message structure diagram

---



# Message structure diagram

---



# Segment descriptions

| Number | No | Segment | St | Max rep. | Level | Name |
|--------|----|---------|----|----------|-------|------|
|--------|----|---------|----|----------|-------|------|

|      |   |            |   |   |   |                   |
|------|---|------------|---|---|---|-------------------|
| 0000 | 1 | <b>UNA</b> | M | 1 | 0 | Separator default |
|------|---|------------|---|---|---|-------------------|

| Tag  | Name                     | St | Format | Use/annotations  |
|------|--------------------------|----|--------|--|
| UNA  |                          |    |        |  |
| UNA1 | : separator              | M  | an1    | Separates data elements in a data element group<br><b>: constant</b>                               |
| UNA2 | + separator              | M  | an1    | Separates segment designations, data element groups und data elements<br><b>+ constant</b>         |
| UNA3 | , decimal marker (comma) | M  | an1    | <b>, constant</b>  |
| UNA4 | ? release indicator      | M  | an1    | Restores the original meaning of the mark that follows the release indicator.<br><b>? constant</b> |
| UNA5 | blank space              | M  | an1    | Reserved for later applications  |
| UNA6 | ' segment terminator     | M  | an1    | <b>' constant</b>  |

**Description:**

In the UNA segment, separators, decimal marks, and release indicators are predefined. These marks are defined only once and apply to the following messages until they are revoked. Consequently, they will not be transferred furthermore.

**Example:**

UNA: +, ? ' '

# Segment descriptions

| Number | No | Segment    | St | Max rep. | Level | Name                   |
|--------|----|------------|----|----------|-------|------------------------|
| 0000   | 2  | <b>UNB</b> | M  | 1        | 0     | User data head segment |

| Tag  | Name                               | St | Format | Use/annotations  |
|------|------------------------------------|----|--------|--|
| UNB  |                                    |    |        |  |
| S001 | SYNTAX DESIGNATOR                  | M  |        |  |
| 0001 | Syntax identification              | M  | a4     | Constant value:<br><b>UNOC EDIFACT syntax character set C</b>  |
| 0002 | Syntax version number              | M  | n1     | Constant value:<br><b>3 EDIFACT syntax version 3</b>   |
| S002 | SENDER OF THE INTERCHANGE FILE     | M  |        |  |
| 0004 | Sender designation                 | M  | an..35 | Identifier of the sender (e. g. identification number in the Telebox400)   |
| 0007 | Participant designation, qualifier | M  | an..4  | This data element serves for the definite specification of the participants.<br>The following codes are available:<br><b>65 sender Telebox400 user</b><br><b>ZZZ sender (other network operators)</b><br><b>14 sender GLN</b><br><b>SHK SHK mail</b>                                       |
| S003 | RECIPIENT OF THE INTERCHANGE FILE  | M  |        |  |
| 0010 | Recipient designation              | M  | an..35 | Identifier of the recipient (e. g. identification number in the Telebox400)  |
| 0007 | Participant designation, qualifier | M  | an..4  | This data element serves for the definite specification of the participants.<br>The following codes are available:<br><b>65 recipient Telebox400 user</b><br><b>ZZZ recipient (other network operators)</b><br><b>14 recipient GLN</b><br><b>SHK SHK mail</b>                              |
| S004 | DATE/TIME OF CREATION              | M  |        |  |
| 0017 | Date of creation                   | M  | n6     | Date of the creation of the message on the side of the sender in YYMMDD format (this format is prescribed by the EDIFACT application guideline for service segments).  |
| 0019 | Time of creation                   | M  | n4     | Format: HHMM   |
| 0020 | DATA EXCHANGE REFERENCE            | M  | an..14 | Number for each communication address (X.400, Provider, ...) and message type, rising in ascending order. The data exchange reference number serves as a plausibility test for the identification of double transfers and failed transfers. This task is being fulfilled by the converter. |
| S005 |                                    | N  |        |  |
| 0022 |                                    | N  |        | Not used in the subset.  |
| 0026 |                                    | N  |        | Not used in the subset.  |
| 0029 |                                    | N  |        | Not used in the subset.  |
| 0031 |                                    | N  |        | Not used in the subset.  |
| 0032 |                                    | N  |        | Not used in the subset.  |
| 0035 | Test indicator                     | C  | n1     | Test indicator   |

**Description:**

In the UNB segment, specifications re syntax, sender/recipient of the transfer file, the date and time of its creation, and a data transfer reference are transferred.

**Example:**

UNB+UNOC:3+4399901598867:65+Lieferant-DE:65+041214:1517+1+++++1'

# Segment descriptions

| Number | No | Segment    | St | Max rep. | Level | Name           |
|--------|----|------------|----|----------|-------|----------------|
| 0010   | 3  | <b>UNH</b> | M  | 1        | 0     | Message header |

| Tag  | Name   | St | Format | Use/annotations  |
|------|--|----|--------|--|
| UNH  |  |    |        |  |
| 0062 | MESSAGE REFERENCE NUMBER                       | M  | an..14 | In each transfer file, every message is consistently numbered in ascending order, beginning with "1". This task is being fulfilled by the converter. |
| S009 | MESSAGE IDENTIFICATION                         | M  |        |  |
| 0065 | Message type identification                    | M  | an..6  | Constant value:<br><b>ORDERS Order</b>   |
| 0052 | Version number of the message type             | M  | an..3  | Constant value:<br><b>D Draft version/UN/EDIFACT Directory</b>   |
| 0054 | Release number of the message type             | M  | an..3  | Constant value:<br><b>96B UN/EDIFACT Draft Directory D.96B</b>   |
| 0051 | Administrative organization, coded             | M  | an..2  | <b>UN United Nations UN/ECE/TRADE/WP.4</b>   |
| 0057 | Application code of the competent organization | M  | an..6  | Constant value:<br><b>ITEK40 Version 4.0</b>   |

**Description:** In the UNH segment, a message within a transfer file is identified unambiguously.

**Example:** UNH+1+ORDERS:D:96B:UN:ITEK40 '

# Segment descriptions

| Number | No | Segment    | St | Max rep. | Level | Name                 |
|--------|----|------------|----|----------|-------|----------------------|
| 0020   | 4  | <b>BGM</b> | M  | 1        | 0     | Beginning of message |

| Tag  | Name                            | St Format | Use/annotations   |
|------|---------------------------------|-----------|---|
| BGM  |                                 |           |   |
| C002 | DOCUMENT/MESSAGE NAME           | M         |   |
| 1001 | Document/message name, coded    | M an..3   | <b>120</b> Order (stock order)<br><b>220</b> Customer order at the wholesaler's<br><b>221</b> Call-off order / object order<br><b>226</b> Partial call-off order / object order<br><b>227</b> Order on commission (only one customer commission per order)<br><b>228</b> Exhibition order<br><b>126</b> Third-party order<br><b>YA8</b> Exceptional order – warehouse (120)<br><b>YS8</b> Exceptional order – collective order (447)<br><b>YK8</b> Exceptional order – on commission (227)<br><b>248</b> Wholesaler's open purchase order quantity<br><b>447</b> Collective order; indicates an order as a collective order that will be transferred together with other orders of this collective order. The number for the collective order will be transferred in the RFF segment.<br><b>YAB</b> Exceptional order – pick-up<br><b>YST</b> Special order – third party |
| C106 | DOCUMENT/MESSAGE IDENTIFICATION | M         |   |
| 1004 | Document/message number         | M an..35  | Wholesaler's order number   |

**Description:**

In the BGM segment, the purpose and the name of the message are defined.

**Implementation note:**

Small orders can be collected over the day and then transferred in one single transfer transaction (e.g. all orders as attachments in one mail) without experiencing adverse effects on conditions. Each of these individual orders is marked as a collective order in the BGM segment. Via the RFF segment these orders are then linked to an additional collective order number. Also without analysing the collective order number the conditions apply to all orders that are transferred.

**Example:**

BGM+120+1'

# Segment descriptions

| Number | No | Segment    | St | Max rep. | Level | Name              |
|--------|----|------------|----|----------|-------|-------------------|
| 0030   | 5  | <b>DTM</b> | M  | 1        | 1     | <b>Order date</b> |

| Tag  | Name                                     | St Format | Use/annotations                                 |
|------|--|-----------|---|
| DTM  |  |           |   |
| C507 | DATE/TIME/PERIOD DATA                    | M         |   |
| 2005 | Date/time/period data, qualifier         | M an..3   | <b>137 document/message date</b>                |
| 2380 | Date/time/period data                    | M an..35  | Date, formatted as defined in data element 2379 |
| 2379 | Date/time/period data, format, qualifier | M an..3   | <b>102 YYYYMMDD</b>                             |

**Example:** DTM+137:20141015:102 '

## ORDERS

## Segment descriptions

| Number | No | Segment    | St | Max rep. | Level | Name                         |
|--------|----|------------|----|----------|-------|------------------------------|
| 0030   | 6  | <b>DTM</b> | C  | 2        | 1     | Requested delivery date/time |

| Tag  | Name                                     | St Format | Use/annotations   |
|------|--|-----------|---|
| DTM  |  |           |   |
| C507 | DATE/TIME/PERIOD DATA                    | M         |   |
| 2005 | Date/time/period data, qualifier         | M an..3   | <b>2 delivery date</b><br><b>17 fixed delivery date</b><br><b>63 delivery date/time, at the latest</b><br><b>64 delivery date/time, at the earliest</b> |
| 2380 | Date/time/period data                    | M an..35  | Date, formatted as defined in data element 2379   |
| 2379 | Date/time/period data, format, qualifier | M an..3   | <b>102 YYYYMMDD</b><br><b>616 YYYYWW (delivery week)</b><br><b>203 YYYYMMDDHHMM (year-month-day-hour-minute)</b>  |

**Implementation note:**

Delivery date means the date the goods arrive at their destination. Transmitting the desired delivery date in YYYYMMDD format is recommended. The delivery date stated in the order is not binding for the supplier, the delivery date is the date of the next tour or the date stated in the order confirmation. A fixed delivery date is the signal for special processing. Standard delivery days are suspended. The goods are needed urgently on/by the fixed date.

**Example:**

DTM+2:201410161400:203'



# Segment descriptions

| Number | No | Segment    | St | Max rep. | Level | Name                       |
|--------|----|------------|----|----------|-------|----------------------------|
| 0060   | 7  | <b>IMD</b> | C  | 1        | 0     | Description of the message |

| Tag  | Name                         | St Format | Use/annotations   |
|------|------------------------------|-----------|---|
| IMD  |                              |           |   |
| 7077 |                              | N         | Not used in the subset.   |
| 7081 |                              | N         | Not used in the subset.   |
| C273 | DESCRIPTION OF THE MESSAGE   | M         |   |
| 7009 | Description of the line item | M an..17  | <b>EL express delivery</b><br><b>(priority treatment, fastest despatch type</b><br><b>sequence possible)</b><br><b>VL full delivery (complete delivery)</b><br><b>EV express delivery &amp; full delivery</b> |

**Description:**

In the IMD segment, an order can be marked as express- and/or full delivery.

**Implementation note:**

EL express delivery

Orders marked EL will not be despatched by the supplier with the next tour or warehouse delivery, but picked and packed immediately and despatched using the fastest despatch type sequence possible.

VL full delivery

The order will not be despatched by the supplier before all order items can be delivered in full quantity.

EV express delivery & full delivery

Here a combination of express delivery and full delivery applies.

**Example:**

IMD+++EL '

# Segment descriptions

| Number | No | Segment    | St | Max rep. | Level | Name                                   |
|--------|----|------------|----|----------|-------|--|
| 0070   | 8  | <b>FTX</b> | C  | 1        | 1     | Additional text referring to the order |

| Tag  | Name            | St Format | Use/annotations   |
|------|-----------------|-----------|---|
| FTX  |                 |           |   |
| 4451 | TEXT, QUALIFIER | M an..3   | The following codes are available:<br><b>ORI Additional text referring to the order</b> |
| 4453 |                 | N         | Not used in the subset.   |
| C107 |                 | N         |   |
| 4441 |                 | N         | Not used in the subset.   |
| C108 | FREE TEXT       | M         |   |
| 4440 | Free text       | M an..70  |   |
| 4440 | Free text       | C an..70  |   |
| 4440 | Free text       | C an..70  |   |
| 4440 | Free text       | C an..70  |   |
| 4440 | Free text       | C an..70  |   |

**Description:**

In the FTX segment, an additional text referring to the order can be transferred.

**Implementation note:**

EDIFACT orders from the wholesalers are processed fully automatically by the industry. This means that free texts referring to the order are ignored in order processing. EDIFACT orders with qualifiers such as YA8, YS8, YK8, YAB and YST are taken out of automatic processing and integrated in the workflow of the sales back office. There the special agreement transferred in the free text referring to the order will be read, checked and implemented in the order in the supplier's system.

**Example:**

```
FTX+ORI+++additional text:additional text:additional text:additional text:
additional text'
```

# Segment descriptions

| Number | No | Segment    | St | Max rep. | Level | Name              |
|--------|----|------------|----|----------|-------|-------------------|
| 0070   | 9  | <b>FTX</b> | C  | 1        | 1     | Notification text |

| Tag  | Name            | St Format | Use/annotations                                |
|------|-----------------|-----------|--|
| FTX  |                 |           |  |
| 4451 | TEXT, QUALIFIER | M an..3   | <b>DIN notification text for the forwarder</b> |
| 4453 |                 | N         | Not used in the subset.                        |
| C107 |                 | N         |  |
| 4441 |                 | N         | Not used in the subset.                        |
| C108 | FREE TEXT       | M         |  |
| 4440 | Free text       | M an..70  |  |
| 4440 | Free text       | C an..70  |  |
| 4440 | Free text       | C an..70  |  |
| 4440 | Free text       | C an..70  |  |
| 4440 | Free text       | C an..70  |  |

**Description:** In the FTX segment, a notification text for the forwarder can be transferred.

**Example:** FTX+DIN+++free text:free text:free text:free text:free text'

# Segment descriptions

| Number | No | Segment | St | Max rep. | Level | Name |
|--------|----|---------|----|----------|-------|------|
|--------|----|---------|----|----------|-------|------|

|      |  |            |   |   |   |  |
|------|--|------------|---|---|---|--|
| 0080 |  | <b>SG1</b> | C | 1 | 1 | <b>Supplier's transaction/object/project/blanket purchase order number</b> |
|------|--|------------|---|---|---|--|

This segment group serves the referencing of documents and transactions that the order refers to.

|      |    |            |   |   |   |                       |
|------|----|------------|---|---|---|-----------------------|
| 0090 | 10 | <b>RFF</b> | M | 1 | 1 | <b>Reference data</b> |
|------|----|------------|---|---|---|-----------------------|

| Tag  | Name                 | St Format | Use/annotations   |
|------|----------------------|-----------|---|
| RFF  |                      |           |   |
| C506 | REFERENCE DATA       | M         |   |
| 1153 | Reference, qualifier | M an..3   | <b>ACE supplier's transaction/object/project/ blanket purchase order number</b> |
| 1154 | Reference number     | M an..35  | Reference number referring to the qualifier selected in data element 1153       |

**Description:** In the RFF segment, numbers regarding documents and transactions that the order refers to are transferred.

**Implementation note:** ACE Supplier's transaction number (only for BGM 221, 226 or YAB)  
These codes serve identification within the processing of object- or blanket purchase orders.

**Example:** RFF+ACE:1 '

# Segment descriptions

| Number | No | Segment | St | Max rep. | Level | Name |
|--------|----|---------|----|----------|-------|------|
|--------|----|---------|----|----------|-------|------|

0080      **SG1**      C      1      1      **Item number wholesale/trade**

This segment group serves the referencing of documents and transactions that the order refers to.

0090    11      **RFF**      M      1      1      **Reference data**

| Tag  | Name                 | St Format | Use/annotations  |
|------|----------------------|-----------|--|
| RFF  |                      |           |  |
| C506 | REFERENCE DATA       | M         |  |
| 1153 | Reference, qualifier | M an..3   | <b>AEP item number wholesale/trade</b>                                     |
| 1154 | Reference number     | M an..35  | Reference number referring to the qualifier selected in data element 1153. |

**Description:** In the RFF segment, numbers regarding documents and transactions that the order refers to are transferred.

**Implementation note:** AEP Item number wholesale/trade (for information only)  
These codes serve identification within the processing of object- or blanket purchase orders.

**Example:** RFF+AEP:1 '

# Segment descriptions

| Number | No | Segment   | St | Max rep. | Level | Name                                      |
|--------|----|---|----|----------|-------|---|
| 0080   |    | <b>SG1</b>  | C  | 1        | 1     | <b>Item description (characters 1-30)</b> |
|        |    | This is the first part of the 60-character item description. The remaining characters are transferred in the following RFF segment. |    |          |       |   |
| 0090   | 12 | <b>RFF</b>  | M  | 1        | 1     | <b>Reference data</b>                     |

| Tag  | Name                 | St | Format | Use/annotations  |
|------|----------------------|----|--------|--|
| RFF  |                      |    |        |  |
| C506 | REFERENCE DATA       | M  |        |  |
| 1153 | Reference, qualifier | M  | an..3  | <b>AFO item description (characters 1-30)</b>                              |
| 1154 | Reference number     | M  | an..35 | Reference number referring to the qualifier selected in data element 1153. |

**Description:** In the RFF segment, numbers regarding documents and transactions that the order refers to are transferred.

**Implementation note:** AFO Item description wholesale/trade (for information only)  
These codes serve identification within the processing of object- or blanket purchase orders.

**Example:** RFF+AFO:1 '

# Segment descriptions

| Number | No | Segment    | St | Max rep. | Level | Name  |
|--------|----|------------|----|----------|-------|---|
| 0080   |    | <b>SG1</b> | C  | 1        | 1     | <b>Item description (characters 31-60)</b><br>Here the second part of the 60-character item description is transferred. |
| 0090   | 13 | <b>RFF</b> | M  | 1        | 1     | <b>Reference data</b>   |

| Tag  | Name                 | St Format | Use/annotations  |
|------|----------------------|-----------|--|
| RFF  |                      |           |  |
| C506 | REFERENCE DATA       | M         |  |
| 1153 | Reference, qualifier | M an..3   | <b>AFP item description (characters 31-60)</b>                             |
| 1154 | Reference number     | M an..35  | Reference number referring to the qualifier selected in data element 1153. |

**Description:** In the RFF segment, numbers regarding documents and transactions that the order refers to are transferred.

**Implementation note:** AFP Item description wholesale/trade (for information only)  
These codes serve identification within the processing of object- or blanket purchase orders.

**Example:** RFF+AFP:1 '

# Segment descriptions

| Number | No | Segment | St | Max rep. | Level | Name |
|--------|----|---------|----|----------|-------|------|
|--------|----|---------|----|----------|-------|------|

0080      **SG1**      C      1      1      **Collective order number**

This segment group serves the referencing of documents and transactions that the order refers to.

0090    14      **RFF**      M      1      1      **Reference data**

| Tag  | Name                 | St Format | Use/annotations  |
|------|----------------------|-----------|--|
| RFF  |                      |           |  |
| C506 | REFERENCE DATA       | M         |  |
| 1153 | Reference, qualifier | M an..3   | <b>ACD collective order number</b>   |
| 1154 | Reference number     | M an..35  | Reference number referring to the qualifier selected in data element 1153. |

**Description:** In the RFF segment, numbers regarding documents and transactions that the order refers to are transferred.

**Implementation note:** ACD Collective order number (only for BGM 447 or YS8)  
These codes serve identification within the processing of object- or blanket purchase orders.

**Example:** RFF+ACD:1 '



# Segment descriptions

| Number | No | Segment | St | Max rep. | Level | Name |
|--------|----|---------|----|----------|-------|------|
|--------|----|---------|----|----------|-------|------|

0110      **SG2**      C      1      1      **Supplier**

This segment group serves for the indication of the partners and places.

0120    15      **NAD**      M      1      1      **Name and address**

| Tag  | Name                                 | St | Format | Use/annotations   |
|------|--------------------------------------|----|--------|---|
| NAD  |                                      |    |        |   |
| 3035 | PARTNER, QUALIFIER                   | M  | an..3  | <b>SU supplier (industry)</b>   |
| C082 | IDENTIFICATION OF THE PARTNER        | M  |        |   |
| 3039 | Partner identification number, coded | M  | an..35 | In relation to the qualifier stated above, the identification number of the partner will be provided here.  |
| 1131 |                                      | N  |        | Not used in the subset.   |
| 3055 | Administrative organization, coded   | M  | an..3  | The following codes are available:<br><b>9 GLN (GS1 as the German issuer of the GLN numbers)</b><br><b>ZZZ bilaterally agreed upon (customer- and supplier numbers)</b>   |
| C058 |                                      | N  |        |   |
| 3124 |                                      | N  |        | Not used in the subset.   |
| C080 | NAME OF THE PARTNER                  | C  |        |   |
| 3036 | Name 1 of the partner                | M  | an..35 | Name 1 of the partner.  |
| 3036 | Name 2 of the partner                | C  | an..35 | Name 2 of the partner.  |
| 3036 | Name 3 of the partner                | C  | an..35 | Name 3 of the partner.  |
| C059 | STREET                               | C  |        |   |
| 3042 | Street and house number              | M  | an..35 | Building name/number and street name  |
| 3164 | PLACE                                | C  | an..35 |   |
| 3229 |                                      | N  |        | Not used in the subset.   |
| 3251 | POSTAL CODE/ZIP CODE                 | C  | an..9  |   |
| 3207 | COUNTRY, CODED                       | C  | an..3  | The most important country codes according to ISO 3166 (the postal codes have to be given on the delivery note papers):<br><b>BE Belgium</b><br><b>BG Bulgaria</b><br><b>DK Denmark</b><br><b>DE Germany</b><br><b>FI Finland</b><br><b>FR France</b><br><b>GR Greece</b><br><b>GB Great Britain</b><br><b>IE Ireland</b><br><b>IT Italy</b><br><b>CA Canada</b><br><b>LU Luxembourg</b><br><b>NL Netherlands</b><br><b>NO Norway</b><br><b>AT Austria</b><br><b>PT Portugal</b><br><b>SE Sweden</b><br><b>CH Switzerland</b><br><b>ES Spain</b><br><b>TR Turkey</b><br><b>US USA</b> |

**Description:** In the NAD segment, data for the identification of the parties involved as well as important address details are transferred.

**Example:** NAD+SU+4012345000009::9++Joe:John:Sample+Any Street 16+Any City++12345+DE'

# Segment descriptions

| Number | No | Segment | St | Max rep. | Level | Name |
|--------|----|---------|----|----------|-------|------|
|--------|----|---------|----|----------|-------|------|

0210      **SG5**      C      1      2      **CTA-COM**

This segment group contains the CTA segment for the indication of the contact person and the COM segment for the indication of the communication link with the contact person.

0220    16      **CTA**      M      1      2      **Communication partner**

| Tag  | Name                             | St | Format | Use/annotations                                    |
|------|----------------------------------|----|--------|--|
| CTA  |                                  |    |        |  |
| 3139 |                                  | N  |        | Not used in the subset.                            |
| C056 | DEPARTMENT OR EMPLOYEE DETAILS   | M  |        |  |
| 3413 |                                  | N  |        | Not used in the subset.                            |
| 3412 | Department or person responsible | M  | an..35 | Name of the person responsible for the transaction |

**Description:** In the CTA segment, the name of the person responsible for the transaction at hand, both at the sender's and the recipient's, can be transferred.

**Example:** CTA++:Joe Sample'

# Segment descriptions

| Number | No | Segment | St | Max rep. | Level | Name |
|--------|----|---------|----|----------|-------|------|
|--------|----|---------|----|----------|-------|------|

0210      **SG5**      C      1      2      **CTA-COM**

This segment group contains the CTA segment for the indication of the contact person and the COM segment for the indication of the communication link with the contact person.

0230    17      **COM**      C      3      3      **Communication link**

| Tag  | Name                                     | St Format | Use/annotations  |
|------|--|-----------|--|
| COM  |  |           |  |
| C076 | COMMUNICATION LINK                       | M         |  |
| 3148 | Communication number                     | M an..512 |  |
| 3155 | Communication channel/service, qualifier | M an..3   | The following codes are available:<br><b>EM E-Mail</b><br><b>FX Facsimile</b><br><b>TE Telephone</b> |

**Description:** A segment for the indication of the communication number and -type of the person responsible or department referred to in the CTA segment.

**Example:** COM+joe\_sample@e\_mail.de:EM'

# Segment descriptions

| Number | No | Segment | St | Max rep. | Level | Name |
|--------|----|---------|----|----------|-------|------|
|--------|----|---------|----|----------|-------|------|

0110      **SG2**      C      1      1      **Wholesaler**

This segment group serves for the indication of the partners and places.

0120    18      **NAD**      M      1      1      **Name and address**

| Tag  | Name                                 | St Format | Use/annotations   |
|------|--------------------------------------|-----------|---|
| NAD  |                                      |           |   |
| 3035 | PARTNER, QUALIFIER                   | M an..3   | The qualifier ST is only to be used for third-party deliveries.<br><b>WS Wholesaler</b>   |
| C082 | IDENTIFICATION OF THE PARTNER        | M         |   |
| 3039 | Partner identification number, coded | M an..35  | In relation to the qualifier stated above, the identification number of the partner will be provided here.  |
| 1131 |                                      | N         | Not used in the subset.   |
| 3055 | Administrative organization, coded   | M an..3   | The following codes are available:<br><b>9 GLN (GS1 as the German issuer of the GLN numbers)</b><br><b>ZZZ bilaterally agreed upon (customer- and supplier numbers)</b>   |
| C058 |                                      | N         |   |
| 3124 |                                      | N         | Not used in the subset.   |
| C080 | NAME OF THE PARTNER                  | C         |   |
| 3036 | Name 1 of the partner                | M an..35  | Name 1 of the partner.  |
| 3036 | Name 2 of the partner                | C an..35  | Name 2 of the partner.  |
| 3036 | Name 3 of the partner                | C an..35  | Name 3 of the partner.  |
| C059 | STREET                               | C         |   |
| 3042 | Street and house number              | M an..35  | Building name/number and street name  |
| 3164 | PLACE                                | C an..35  |   |
| 3229 |                                      | N         | Not used in the subset.   |
| 3251 | POSTAL CODE/ZIP CODE                 | C an..9   |   |
| 3207 | COUNTRY, CODED                       | C an..3   | The most important country codes according to ISO 3166 (the postal codes have to be given on the delivery note papers):<br><b>BE Belgium</b><br><b>BG Bulgaria</b><br><b>DK Denmark</b><br><b>DE Germany</b><br><b>FI Finland</b><br><b>FR France</b><br><b>GR Greece</b><br><b>GB Great Britain</b><br><b>IE Ireland</b><br><b>IT Italy</b><br><b>CA Canada</b><br><b>LU Luxembourg</b><br><b>NL Netherlands</b><br><b>NO Norway</b><br><b>AT Austria</b><br><b>PT Portugal</b><br><b>SE Sweden</b><br><b>CH Switzerland</b><br><b>ES Spain</b><br><b>TR Turkey</b><br><b>US USA</b> |

**Description:** In the NAD segment, data for the identification of the parties involved as well as important address details are transferred.

**Example:** NAD+WS+4012345000009::9++Joe:John:Sample+Any Street 16+Any City++12345+DE'

## Segment descriptions

| Number  | No | Segment    | St | Max rep. | Level | Name                         |
|---|----|------------|----|----------|-------|------------------------------|
| 0210  |    | <b>SG5</b> | C  | 1        | 2     | <b>CTA-COM</b>               |
| This segment group contains the CTA segment to indicate a contact person. |    |            |    |          |       |                              |
| 0220  | 19 | <b>CTA</b> | M  | 1        | 2     | <b>Communication partner</b> |

| Tag  | Name                             | St Format | Use/annotations                                    |
|------|----------------------------------|-----------|--|
| CTA  |                                  |           |  |
| 3139 |                                  | N         | Not used in the subset.                            |
| C056 | DEPARTMENT OR EMPLOYEE DETAILS   | M         |  |
| 3413 |                                  | N         | Not used in the subset.                            |
| 3412 | Department or person responsible | M an..35  | Name of the person responsible for the transaction |

**Description:** In the CTA segment, the name of the person responsible for the transaction at hand, both at the sender's and the recipient's, can be transferred.

**Example:** CTA++:Joe Sample'

# Segment descriptions

| Number | No | Segment | St | Max rep. | Level | Name |
|--------|----|---------|----|----------|-------|------|
|--------|----|---------|----|----------|-------|------|

|      |  |            |   |   |   |                |
|------|--|------------|---|---|---|----------------|
| 0210 |  | <b>SG5</b> | C | 1 | 2 | <b>CTA-COM</b> |
|------|--|------------|---|---|---|----------------|

This segment group contains the CTA segment to indicate a contact person.

|      |    |            |   |   |   |                           |
|------|----|------------|---|---|---|---------------------------|
| 0230 | 20 | <b>COM</b> | C | 3 | 3 | <b>Communication link</b> |
|------|----|------------|---|---|---|---------------------------|

| Tag  | Name                                     | St | Format  | Use/annotations  |
|------|--|----|---------|--|
| COM  |  |    |         |  |
| C076 | COMMUNICATION LINK                       | M  |         |  |
| 3148 | Communication number                     | M  | an..512 |  |
| 3155 | Communication channel/service, qualifier | M  | an..3   | The following codes are available:<br><b>EM</b> E-Mail<br><b>FX</b> Facsimile<br><b>TE</b> Telephone |

**Description:** A segment for the indication of the communication number and -type of the person responsible or department referred to in the CTA segment.

**Example:** COM+joe\_sample@e\_mail.de:EM'

# Segment descriptions

| Number   | No | Segment    | St | Max rep. | Level | Name                    |
|--|----|------------|----|----------|-------|-------------------------|
| 0110   |    | <b>SG2</b> | C  | 1        | 1     | <b>Shipping address</b> |
| This segment group serves for the indication of the partners and places. |    |            |    |          |       |                         |
| 0120   | 21 | <b>NAD</b> | M  | 1        | 1     | <b>Name and address</b> |

| Tag  | Name                                 | St Format | Use/annotations   |
|------|--------------------------------------|-----------|---|
| NAD  |                                      |           |   |
| 3035 | PARTNER, QUALIFIER                   | M an..3   | The qualifier ST is only to be used for third-party deliveries.<br><b>ST third-party delivery</b>   |
| C082 | IDENTIFICATION OF THE PARTNER        | C         |   |
| 3039 | Partner identification number, coded | M an..35  | In relation to the qualifier stated above, the identification number of the partner will be provided here.  |
| 1131 |                                      | N         | Not used in the subset.   |
| 3055 | Administrative organization, coded   | C an..3   | The following codes are available:<br><b>9 GLN (GS1 as the German issuer of the GLN numbers)</b><br><b>ZZZ bilaterally agreed upon (customer- and supplier numbers)</b>   |
| C058 |                                      | N         |   |
| 3124 |                                      | N         | Not used in the subset.   |
| C080 | NAME OF THE PARTNER                  | M         |   |
| 3036 | Name 1 of the partner                | M an..35  | Name 1 of the partner.  |
| 3036 | Name 2 of the partner                | C an..35  | Name 2 of the partner.  |
| 3036 | Name 3 of the partner                | C an..35  | Name 3 of the partner.  |
| C059 | STREET                               | M         |   |
| 3042 | Street and house number              | M an..35  | Building name/number and street name  |
| 3164 | PLACE                                | M an..35  |   |
| 3229 |                                      | N         | Not used in the subset.   |
| 3251 | POSTAL CODE/ZIP CODE                 | M an..9   |   |
| 3207 | COUNTRY, CODED                       | M an..3   | The most important country codes according to ISO 3166 (the postal codes have to be given on the delivery note papers):<br><b>BE Belgium</b><br><b>BG Bulgaria</b><br><b>DK Denmark</b><br><b>DE Germany</b><br><b>FI Finland</b><br><b>FR France</b><br><b>GR Greece</b><br><b>GB Great Britain</b><br><b>IE Ireland</b><br><b>IT Italy</b><br><b>CA Canada</b><br><b>LU Luxembourg</b><br><b>NL Netherlands</b><br><b>NO Norway</b><br><b>AT Austria</b><br><b>PT Portugal</b><br><b>SE Sweden</b><br><b>CH Switzerland</b><br><b>ES Spain</b><br><b>TR Turkey</b><br><b>US USA</b> |

**Description:** In the NAD segment, data for the identification of the parties involved as well as important address details are transferred.

**Implementation note:** Here the partner's name and address have to be given.

**Example:** NAD+ST+4012345000009::9++Joe:John:Sample+Any Street 16+Any City++12345+DE'

# Segment descriptions

| Number | No | Segment | St | Max rep. | Level | Name |
|--------|----|---------|----|----------|-------|------|
|--------|----|---------|----|----------|-------|------|

0210      **SG5**      C      1      2      **CTA-COM**

This segment group contains the CTA segment for the indication of the contact person and the COM segment for the indication of the communication link.

0220    22      **CTA**      M      1      2      **Communication partner**

| Tag  | Name                             | St | Format | Use/annotations                                    |
|------|----------------------------------|----|--------|--|
| CTA  |                                  |    |        |  |
| 3139 |                                  | N  |        | Not used in the subset.                            |
| C056 | DEPARTMENT OR EMPLOYEE DETAILS   | M  |        |  |
| 3413 |                                  | N  |        | Not used in the subset.                            |
| 3412 | Department or person responsible | M  | an..35 | Name of the person responsible for the transaction |

**Description:** In the CTA segment, the name of the person responsible for the transaction at hand, both at the sender's and the recipient's, can be transferred.

**Example:** CTA++:Joe Sample'



# Segment descriptions

| Number | No | Segment | St | Max rep. | Level | Name |
|--------|----|---------|----|----------|-------|------|
|--------|----|---------|----|----------|-------|------|

0210      **SG5**      C      1      2      **CTA-COM**

This segment group contains the CTA segment for the indication of the contact person and the COM segment for the indication of the communication link.

0230    23      **COM**      C      3      3      **Communication link**

| Tag  | Name                                     | St Format | Use/annotations  |
|------|--|-----------|--|
| COM  |  |           |  |
| C076 | COMMUNICATION LINK                       | M         |  |
| 3148 | Communication number                     | M an..512 |  |
| 3155 | Communication channel/service, qualifier | M an..3   | The following codes are available:<br><b>EM E-Mail</b><br><b>FX Facsimile</b><br><b>TE Telephone</b> |

**Description:** A segment for the indication of the communication number and -type of the person responsible or department referred to in the CTA segment.

**Example:** COM+joe\_sample@e\_mail.de:EM'

# Segment descriptions

| Number | No | Segment | St | Max rep. | Level | Name |
|--------|----|---------|----|----------|-------|------|
|--------|----|---------|----|----------|-------|------|

0110      **SG2**      C      1      1      **Consignee**

This segment group serves for the indication of the partners and places.

0120    24      **NAD**      M      1      1      **Name and address**

| Tag  | Name                                 | St | Format | Use/annotations   |
|------|--------------------------------------|----|--------|---|
| NAD  |                                      |    |        |   |
| 3035 | PARTNER, QUALIFIER                   | M  | an..3  | The qualifier ST is only to be used for third-party deliveries  |
|      |                                      |    |        | <b>DP Consignee wholesaler</b>  |
| C082 | IDENTIFICATION OF THE PARTNER        | M  |        |   |
| 3039 | Partner identification number, coded | M  | an..35 | In relation to the qualifier stated above, the identification number of the partner will be provided here.  |
| 1131 |                                      | N  |        | Not used in the subset.   |
| 3055 | Administrative organization, coded   | M  | an..3  | The following codes are available:<br><b>9 GLN (GS1 as the German issuer of the GLN numbers)</b><br><b>ZZZ bilaterally agreed upon (customer- and supplier numbers)</b>   |
| C058 |                                      | N  |        |   |
| 3124 |                                      | N  |        | Not used in the subset.   |
| C080 | NAME OF THE PARTNER                  | M  |        |   |
| 3036 | Name 1 of the partner                | M  | an..35 | Name 1 of the partner.  |
| 3036 | Name 2 of the partner                | C  | an..35 | Name 2 of the partner.  |
| 3036 | Name 3 of the partner                | C  | an..35 | Name 3 of the partner.  |
| C059 | STREET                               | M  |        |   |
| 3042 | Street and house number              | M  | an..35 | Building name/number and street name  |
| 3164 | PLACE                                | M  | an..35 |   |
| 3229 |                                      | N  |        | Not used in the subset.   |
| 3251 | POSTAL CODE/ZIP CODE                 | M  | an..9  |   |
| 3207 | COUNTRY, CODED                       | M  | an..3  | The most important country codes according to ISO 3166 (the postal codes have to be given on the delivery note papers):<br><b>BE Belgium</b><br><b>BG Bulgaria</b><br><b>DK Denmark</b><br><b>DE Germany</b><br><b>FI Finland</b><br><b>FR France</b><br><b>GR Greece</b><br><b>GB Great Britain</b><br><b>IE Ireland</b><br><b>IT Italy</b><br><b>CA Canada</b><br><b>LU Luxembourg</b><br><b>NL Netherlands</b><br><b>NO Norway</b><br><b>AT Austria</b><br><b>PT Portugal</b><br><b>SE Sweden</b><br><b>CH Switzerland</b><br><b>ES Spain</b><br><b>TR Turkey</b><br><b>US USA</b> |

**Description:** In the NAD segment, data for the identification of the parties involved as well as important address details are transferred.

**Implementation note:** Either the NAD segment for the wholesaler (WS) or the NAD segment for the consignee (DP) has to be transferred.

**Example:** NAD+DP+4012345000009::9++Joe:John:Sample+Any Street 16+Any City++12345+DE'

# Segment descriptions

| Number  | No | Segment    | St | Max rep. | Level | Name                         |
|---|----|------------|----|----------|-------|------------------------------|
| 0210  |    | <b>SG5</b> | C  | 1        | 2     | <b>CTA-COM</b>               |
| This segment group contains the CTA segment to indicate a contact person. |    |            |    |          |       |                              |
| 0220  | 25 | <b>CTA</b> | M  | 1        | 2     | <b>Communication partner</b> |

| Tag  | Name                             | St | Format | Use/annotations                                    |
|------|----------------------------------|----|--------|--|
| CTA  |                                  |    |        |  |
| 3139 |                                  | N  |        | Not used in the subset.                            |
| C056 | DEPARTMENT OR EMPLOYEE DETAILS   | M  |        |  |
| 3413 |                                  | N  |        | Not used in the subset.                            |
| 3412 | Department or person responsible | M  | an..35 | Name of the person responsible for the transaction |

**Description:** In the CTA segment, the name of the person responsible for the transaction at hand, both at the sender's and the recipient's, can be transferred.

**Example:** CTA++:Joe Sample'

## Segment descriptions

| Number | No | Segment | St | Max rep. | Level | Name |
|--------|----|---------|----|----------|-------|------|
|--------|----|---------|----|----------|-------|------|

|      |  |            |   |   |   |                |
|------|--|------------|---|---|---|----------------|
| 0210 |  | <b>SG5</b> | C | 1 | 2 | <b>CTA-COM</b> |
|------|--|------------|---|---|---|----------------|

This segment group contains the CTA segment to indicate a contact person.

|      |    |            |   |   |   |                           |
|------|----|------------|---|---|---|---------------------------|
| 0230 | 26 | <b>COM</b> | C | 3 | 3 | <b>Communication link</b> |
|------|----|------------|---|---|---|---------------------------|

| Tag  | Name                                     | St Format | Use/annotations  |
|------|--|-----------|--|
| COM  |  |           |  |
| C076 | COMMUNICATION LINK                       | M         |  |
| 3148 | Communication number                     | M an..512 |  |
| 3155 | Communication channel/service, qualifier | M an..3   | The following codes are available:<br><b>EM</b> E-Mail<br><b>FX</b> Facsimile<br><b>TE</b> Telephone |

**Description:** A segment for the indication of the communication number and -type of the person responsible or department referred to in the CTA segment.

**Example:** COM+joe\_sample@e\_mail.de:EM'

# Segment descriptions

| Number  | No | Segment    | St | Max rep. | Level | Name                        |
|---|----|------------|----|----------|-------|-----------------------------|
| 0280  |    | <b>SG7</b> | C  | 1        | 1     | <b>CUX</b>                  |
| This segment group contains the CUX segment und serves to transfer a reference currency for the entire invoice. |    |            |    |          |       |                             |
| 0290  | 27 | <b>CUX</b> | M  | 1        | 1     | <b>Currency information</b> |

| Tag  | Name                     | St Format | Use/annotations   |
|------|--------------------------|-----------|---|
| CUX  |                          |           |   |
| C504 | CURRENCY DATA            | C         |   |
| 6347 | Currency data, qualifier | M an..3   | Constant value:<br><b>2 Reference currency</b>  |
| 6345 | Currency, coded          | C an..3   | The most important currency codes according to ISO 4217:<br><b>DKK</b> Danish kroner (crowns)<br><b>EUR</b> Euros<br><b>GBP</b> British pounds<br><b>CAD</b> Canadian dollars<br><b>NOK</b> Norwegian kroner (crowns)<br><b>PLN</b> Polish zloty<br><b>SEK</b> Swedish krona (crowns)<br><b>CHF</b> Swiss francs<br><b>USD</b> US dollars |

**Description:** In the CUX segment, data referring to currency units required for international transactions are transferred.

**Implementation note:** If prices are transferred, the indication is mandatory.

**Example:** CUX+2 : DKK '

# Segment descriptions

| Number | No | Segment | St | Max rep. | Level | Name |
|--------|----|---------|----|----------|-------|------|
|--------|----|---------|----|----------|-------|------|

0690      **SG18**      C      2      1      **ALC-SG20-SG21**

This segment group serves to transfer allowances and charges for the entire invoice.

0700    28      **ALC**      M      1      1      **Allowances and charges**

| Tag  | Name                              | St Format | Use/annotations  |
|------|-----------------------------------|-----------|--|
| ALC  |                                   |           |  |
| 5463 | ALLOWANCES AND CHARGES, QUALIFIER | M an..3   | <b>A allowance</b><br><b>C charge</b>  |
| C552 |                                   | N         |  |
| 1230 |                                   | N         | Not used in the subset.  |
| 4471 |                                   | N         | Not used in the subset.  |
| 1227 |                                   | N         | Not used in the subset.  |
| C214 | SPECIAL SERVICES                  | M         |  |
| 7161 | Special services, coded           | M an..3   | The following codes are available:<br><b>FI monetary value per order</b><br><b>RAA discount rate</b> |

**Description:** In the ALC segment, allowances and charges for the entire order can be transferred.

**Example:** ALC+A++++RAA '

## Segment descriptions

| Number | No | Segment | St | Max rep. | Level | Name |
|--------|----|---------|----|----------|-------|------|
|--------|----|---------|----|----------|-------|------|

0760      **SG20**      C      1      2      **PCD**

This segment group contains the PCD segment and serves the transfer of allowance and charge percentages.

0770    29      **PCD**      M      1      2      **Percentages**

| Tag  | Name                   | St Format | Use/annotations                                  |
|------|------------------------|-----------|--|
| PCD  |                        |           |  |
| C501 | PERCENTAGES            | M         |  |
| 5245 | Percentages, qualifier | M an..3   | <b>3 percentage rate</b>                         |
| 5482 | Percentage             | M n..10   | Indication of percentage with two decimal places |

**Description:** In the PCD segment, the percentage rate for allowances and charges is transferred.

**Example:** PCD+3:9'

# Segment descriptions

| Number   | No | Segment | St | Max rep. | Level | Name   |
|--|----|---------|----|----------|-------|--------|
| 0790   |    | SG21    | C  | 1        | 2     | MOA    |
| This segment group contains the MOA segment and serves the transfer of allowances and charges as a fixed amount. |    |         |    |          |       |        |
| 0800   | 30 | MOA     | M  | 1        | 2     | Amount |

| Tag  | Name              | St Format | Use/annotations                                  |
|------|-------------------|-----------|--|
| MOA  |                   |           |  |
| C516 | AMOUNT            | M         |  |
| 5025 | Amount, qualifier | M an..3   | 8 amount   |
| 5004 | Amount            | M n..18   | Allowance or charge with two decimal places max. |

**Description:** In the MOA segment, an allowance or charge is transferred as an amount.

**Example:** MOA+8 : 9 '



# Segment descriptions

| Number  | No | Segment     | St | Max rep. | Level | Name                                      |
|---|----|-------------|----|----------|-------|---|
| 0930  |    | <b>SG25</b> | C  | 9999     | 1     | <b>LIN-PIA-IMD-QTY-DTM-SG28-SG29-SG39</b> |
| This segment group serves the transfer of the line item data. |    |             |    |          |       |   |
| 0940  | 31 | <b>LIN</b>  | M  | 1        | 1     | <b>Line item data</b>                     |

| Tag  | Name                             | St Format | Use/annotations   |
|------|----------------------------------|-----------|---|
| LIN  |                                  |           |   |
| 1082 | LINE ITEM NUMBER                 | M n..6    | Unambiguous line item number assigned by the wholesaler   |
| 1229 |                                  | N         | Not used in the subset.   |
| C212 | PRODUCT IDENTIFICATION           | C         |   |
| 7140 | Goods/service number             | M an..35  | Article number assigned by supplier; if there is none available, there will be a text specification in the "IMD" segment. The data element group C212 will not be transferred in this case. |
| 7143 | Goods/service number type, coded | M an..3   | The following codes are available:<br><b>BA</b> basic article number<br><b>EN</b> GTIN<br><b>MF</b> article number assigned by supplier   |

**Description:** In the LIN segment, an invoice line item is identified by a consecutive line item number and also by an article number.

**Implementation note:** If a variant item is transferred, only the line item number will be transferred. The generated final article number and the basic article number are transferred in PIA segments.

**Example:** LIN+9++1:BA'

# Segment descriptions

| Number | No | Segment | St | Max rep. | Level | Name |
|--------|----|---------|----|----------|-------|------|
|--------|----|---------|----|----------|-------|------|

0930      **SG25**      C      9999      1      **LIN-PIA-IMD-QTY-DTM-SG28-SG29-SG39**

This segment group serves the transfer of the line item data.

0950      32      **PIA**      C      1      2      **Generated variant article number**

| Tag  | Name                                | St | Format | Use/annotations   |
|------|-------------------------------------|----|--------|---|
| PIA  |                                     |    |        |   |
| 4347 | PRODUCT IDENTIFICATION FUNCTION     | M  | an..3  | <b>1 additional product information</b>                   |
| C212 | GOODS/SERVICE NUMBER IDENTIFICATION | M  |        |   |
| 7140 | Goods/service number                | M  | an..35 | Article number  |
| 7143 | Goods/service number, coded         | M  | an..3  | <b>GA generated article number (for variant articles)</b> |
| C212 | GOODS/SERVICE NUMBER IDENTIFICATION | C  |        |   |
| 7140 | Goods/service number                | M  | an..35 | Article number  |
| 7143 | Goods/service number, coded         | M  | an..3  | <b>GA generated article number (for variant articles)</b> |
| C212 | GOODS/SERVICE NUMBER IDENTIFICATION | C  |        |   |
| 7140 | Goods/service number                | M  | an..35 | Article number  |
| 7143 | Goods/service number, coded         | M  | an..3  | <b>GA generated article number (for variant articles)</b> |
| C212 | GOODS/SERVICE NUMBER IDENTIFICATION | C  |        |   |
| 7140 | Goods/service number                | M  | an..35 | Article number  |
| 7143 | Goods/service number, coded         | M  | an..3  | <b>GA generated article number (for variant articles)</b> |
| C212 | GOODS/SERVICE NUMBER IDENTIFICATION | C  |        |   |
| 7140 | Goods/service number                | M  | an..35 | Article number  |
| 7143 | Goods/service number, coded         | M  | an..3  | <b>GA generated article number (for variant articles)</b> |

**Implementation note:**

The segment serves the transfer of the generated article number for variant articles.

It is transferred in the repetitions of data element group C212 in data element 7143.

Article number to be transferred:

4711\_A123\_A456\_A789\_B123\_B456\_B789\_C123\_C456\_C789\_D123\_D456

PIA segment

PIA+1+ 4711\_A123\_A456\_A789\_B123\_B456\_B789\_:GA::89+C123\_C456\_C789\_D123\_D456 :GA::89'

**Example:**

PIA+1+1:GA+1:GA+1:GA+1:GA+1:GA'

# Segment descriptions

| Number  | No | Segment     | St | Max rep. | Level | Name                                      |
|---|----|-------------|----|----------|-------|---|
| 0930  |    | <b>SG25</b> | C  | 9999     | 1     | <b>LIN-PIA-IMD-QTY-DTM-SG28-SG29-SG39</b> |
| This segment group serves the transfer of the line item data. |    |             |    |          |       |   |
| 0960  | 33 | <b>IMD</b>  | C  | 2        | 2     | <b>Article specification</b>              |

| Tag  | Name                  | St Format | Use/annotations                 |
|------|-----------------------|-----------|---------------------------------|
| IMD  |                       |           |                                 |
| 7077 |                       | N         | Not used in the subset.         |
| 7081 |                       | N         | Not used in the subset.         |
| C273 | LINE ITEM DESCRIPTION | M         |                                 |
| 7009 | Line item description | M an..17  | <b>SP article specification</b> |
| 1131 |                       | N         | Not used in the subset.         |
| 3055 |                       | N         | Not used in the subset.         |
| 7008 | Line item description | M an..35  | Characters 1-35.                |
| 7008 | Line item description | C an..5   | Characters 36-40.               |

**Description:** This segment is used in the absence of an article number, or if there is no unambiguous number.  
For item specification, 2\*40 characters of item text are available by repeating the IMD segment twice.

**Example:** IMD+++SP:::free text free text free text free:text '

# Segment descriptions

| Number  | No | Segment     | St | Max rep. | Level | Name  |
|---|----|-------------|----|----------|-------|---|
| 0930  |    | <b>SG25</b> | C  | 9999     | 1     | <b>LIN-PIA-IMD-QTY-DTM-SG28-SG29-SG39</b>         |
| This segment group serves the transfer of the line item data. |    |             |    |          |       |   |
| 0960  | 34 | <b>IMD</b>  | C  | 8        | 2     | <b>Additional text referring to the line item</b> |

| Tag  | Name                  | St Format | Use/annotations                                      |
|------|-----------------------|-----------|--|
| IMD  |                       |           |  |
| 7077 |                       | N         | Not used in the subset.                              |
| 7081 |                       | N         | Not used in the subset.                              |
| C273 | LINE ITEM DESCRIPTION | M         |  |
| 7009 | Line item description | M an..17  | <b>ZU additional text referring to the line item</b> |
| 1131 |                       | N         | Not used in the subset.                              |
| 3055 |                       | N         | Not used in the subset.                              |
| 7008 | Line item description | M an..35  | Characters 1-35.                                     |
| 7008 | Line item description | C an..5   | Characters 36-40.                                    |

**Description:**

This segment is used if in addition to the article number and possibly an item text a verbal description of the item is required. In this case the IMD segment can be repeated up to eight times, with 40 characters each (i.e. a total of 320 characters). If possible, this segment should not be used as it requires manual processing of the message.

**Example:**

IMD+++ZU:::free text free text free text free:text '

# Segment descriptions

| Number | No | Segment | St | Max rep. | Level | Name |
|--------|----|---------|----|----------|-------|------|
|--------|----|---------|----|----------|-------|------|

|      |  |             |   |      |   |   |
|------|--|-------------|---|------|---|---|
| 0930 |  | <b>SG25</b> | C | 9999 | 1 | <b>LIN-PIA-IMD-QTY-DTM-SG28-SG29-SG39</b> |
|------|--|-------------|---|------|---|---|

This segment group serves the transfer of the line item data.

|      |    |            |   |    |   |  |
|------|----|------------|---|----|---|--|
| 0960 | 35 | <b>IMD</b> | C | 10 | 2 | <b>Generated text referring to the article</b> |
|------|----|------------|---|----|---|--|

| Tag  | Name                  | St Format | Use/annotations   |
|------|-----------------------|-----------|---|
| IMD  |                       |           |   |
| 7077 |                       | N         | Not used in the subset.   |
| 7081 |                       | N         | Not used in the subset.   |
| C273 | LINE ITEM DESCRIPTION | M         |   |
| 7009 | Line item description | M an..17  | This code is used for transferring the generated article text referring to a variant article. It is transferred in text segments of 35 characters each in the data elements 7008. |
|      |                       |           | <b>GAT generated text referring to the article</b>  |
| 1131 |                       | N         | Not used in the subset.   |
| 3055 |                       | N         | Not used in the subset.   |
| 7008 | Line item description | M an..35  |   |
| 7008 | Line item description | C an..35  |   |

**Description:** The segment serves the transfer of the generated article text referring to variant articles.

**Example:** IMD+++GAT:::generated text generated text gener:ated '

# Segment descriptions

| Number  | No | Segment     | St | Max rep. | Level | Name                                      |
|---|----|-------------|----|----------|-------|---|
| 0930  |    | <b>SG25</b> | C  | 9999     | 1     | <b>LIN-PIA-IMD-QTY-DTM-SG28-SG29-SG39</b> |
| This segment group serves the transfer of the line item data. |    |             |    |          |       |   |
| 0960  | 36 | <b>IMD</b>  | C  | 79       | 2     | <b>List of characteristics</b>            |

| Tag  | Name                  | St | Format | Use/annotations  |
|------|-----------------------|----|--------|--|
| IMD  |                       |    |        |  |
| 7077 |                       | N  |        | Not used in the subset.  |
| 7081 |                       | N  |        | Not used in the subset.  |
| C273 | LINE ITEM DESCRIPTION | M  |        |  |
| 7009 | Line item description | M  | an..17 | This code is used for transferring a list of characteristics referring to a variant article. Here, the characteristics identifier is transferred in the first data element 7008, and the characteristics value in the second data element 7008.<br><b>M characteristic</b> |
| 1131 |                       | N  |        | Not used in the subset.  |
| 3055 |                       | N  |        | Not used in the subset.  |
| 7008 | Line item description | M  | an..35 |  |
| 7008 | Line item description | C  | an..35 |  |

**Description:** The segment serves the transfer of the list of characteristics.

**Example:** IMD+++M::characteristics identifier:characteristics value'

# Segment descriptions

| Number | No | Segment | St | Max rep. | Level | Name |
|--------|----|---------|----|----------|-------|------|
|--------|----|---------|----|----------|-------|------|

|      |  |             |   |      |   |                                    |
|------|--|-------------|---|------|---|------------------------------------|
| 0930 |  | <b>SG25</b> | C | 9999 | 1 | LIN-PIA-IMD-QTY-DTM-SG28-SG29-SG39 |
|------|--|-------------|---|------|---|------------------------------------|

This segment group serves the transfer of the line item data.

|      |    |            |   |   |   |          |
|------|----|------------|---|---|---|----------|
| 0980 | 37 | <b>QTY</b> | M | 1 | 2 | Quantity |
|------|----|------------|---|---|---|----------|

| Tag  | Name                        | St Format | Use/annotations  |
|------|-----------------------------|-----------|--|
| QTY  |                             |           |  |
| C186 | QUANTITY                    | M         |  |
| 6063 | Quantity, qualifier         | M an..3   | <b>12 Quantity</b>   |
| 6060 | Quantity                    | M n..15   | Quantity with three decimal places max.  |
| 6411 | Measurement unit, qualifier | M an..3   | <p>The following codes are available:</p> <p><b>CMK</b> square centimetre</p> <p><b>CMQ</b> cubic centimetre</p> <p><b>CMT</b> centimetre</p> <p><b>DZN</b> dozen</p> <p><b>GRM</b> gram</p> <p><b>HLT</b> hectolitre</p> <p><b>HUR</b> hour</p> <p><b>KGM</b> kilogramme</p> <p><b>KTM</b> kilometre</p> <p><b>LTR</b> litre</p> <p><b>MIN</b> minute</p> <p><b>MMT</b> millimetre</p> <p><b>MTK</b> square metre</p> <p><b>MTQ</b> cubic metre</p> <p><b>MTR</b> metre</p> <p><b>PAK</b> pack</p> <p><b>PCE</b> piece</p> <p><b>PR</b> pair</p> <p><b>RO</b> number of rolls</p> <p><b>SET</b> set</p> <p><b>TNE</b> metric ton</p> <p><b>UI</b> unit of work</p> <p><b>ZZZ</b> additional order note (cf. Implementation note article sets)</p> |

**Description:** In the QTY segment, the quantity ordered and the measurement unit are transferred.

**Example:** QTY+12:9:PCE'

# Segment descriptions

| Number  | No | Segment     | St | Max rep. | Level | Name                                      |
|---|----|-------------|----|----------|-------|---|
| 0930  |    | <b>SG25</b> | C  | 9999     | 1     | <b>LIN-PIA-IMD-QTY-DTM-SG28-SG29-SG39</b> |
| This segment group serves the transfer of the line item data. |    |             |    |          |       |   |
| 1010  | 38 | <b>DTM</b>  | C  | 2        | 2     | <b>Date/time/period data</b>              |

| Tag  | Name                                     | St Format | Use/annotations   |
|------|--|-----------|---|
| DTM  |  |           |   |
| C507 | Requested delivery date/time             | M         |   |
| 2005 | Date/time/period data                    | M an..3   | The following codes are available:<br><b>2 delivery date</b><br><b>17 fixed delivery date</b><br><b>63 date/time of delivery, at the latest</b><br><b>64 date/time of delivery, at the earliest</b> |
| 2380 | Date/time/period data                    | M an..35  | Date, formatted as defined in data element 2379   |
| 2379 | Date/time/period data, format, qualifier | M an..3   | <b>102 YYYYMMDD</b><br><b>616 YYYYWW (delivery week)</b><br><b>203 YYYYMMDDHHMM (year-month-day-hour-minute)</b>  |

**Description:**

In the DTM segment, for individual line items delivery date specifications can be given that differ from those in the header.

**Implementation note:**

Delivery date means the date the goods arrive at their destination. Transmitting the desired delivery date in YYYYMMDD format is recommended. The delivery date stated in the order is not binding for the supplier, the delivery date is the date of the next tour or the date stated in the order confirmation.

**Example:**

DTM+2:20141016:102 '



# Segment descriptions

| Number | No | Segment | St | Max rep. | Level | Name |
|--------|----|---------|----|----------|-------|------|
|--------|----|---------|----|----------|-------|------|

1180      **SG28**      C      1      2      **PRI**

This segment group contains the PRI segment and serves for the transfer of line item prices.

1190    39      **PRI**      M      1      2      **Price information**

| Tag  | Name                        | St Format | Use/annotations  |
|------|-----------------------------|-----------|--|
| PRI  |                             |           |  |
| C509 | PRICE INFORMATION           | M         |  |
| 5125 | Price, qualifier            | M an..3   | The following codes are available:<br><b>GRP gross price</b><br><b>NTP net price</b>   |
| 5118 | Price                       | M n..15   | Price of the item, with two decimal places   |
| 5375 |                             | N         | Not used in the subset.  |
| 5387 |                             | N         | Not used in the subset.  |
| 5284 | Price basis per unit        | M n..9    | The quantity that the previously stated price and the measurement unit stated in data element 6411 refer to. If, for instance, the price refers to one piece, this data element has to state a "1", and data element 6411 has to state the Code "PCE" for "piece". Analogous to the master data, the following values are possible for the price basis:<br>"1" = 1 unit<br>"10" = 10 units<br>"100" = 100 units<br>"1000" = 1000 units   |
| 6411 | Measurement unit, qualifier | M an..3   | This data element should only be used if the indication of price refers to another measurement unit than the indication of quantity in the order.<br>The following codes are available:<br><b>CMK square centimetre</b><br><b>CMQ cubic centimetre</b><br><b>CMT centimetre</b><br><b>DZN dozen</b><br><b>GRM gram</b><br><b>HLT hectolitre</b><br><b>HUR hour</b><br><b>KGM kilogramme</b><br><b>KTM kilometre</b><br><b>LTR litre</b><br><b>MIN minute</b><br><b>MMT millimetre</b><br><b>MTK square metre</b><br><b>MTQ cubic metre</b><br><b>MTR metre</b><br><b>PAK pack</b><br><b>PCE piece</b><br><b>PR pair</b><br><b>RO number of rolls</b><br><b>SET set</b><br><b>TNE metric ton</b><br><b>UI unit of work</b><br><b>ZZZ additional order note (cf. Implementation note article sets)</b> |

**Description:**

In the PRI segment, prices are transferred if they differ from the framework agreement.

**Implementation note:**

Usually, there are fixed arrangements between suppliers and wholesalers referring to prices and conditions. For this reason, many manufacturers will not read and not adopt the data referring to prices and conditions in your EDIFACT orders. Thus, the advice may be given here to do without the transfer of prices and conditions. This will also reduce the amount of data.  
If the prices and conditions agreed upon for the current order vary from the fixed arrangements, they may be transferred with this segment by way of an Exceptional Order (BGM / 002 / 1001 YA8, YS8 and YK8).

**Example:**

PRI+GRP:9:::9:PCE'

# Segment descriptions

| Number | No | Segment | St | Max rep. | Level | Name |
|--------|----|---------|----|----------|-------|------|
|--------|----|---------|----|----------|-------|------|

|      |  |             |   |   |   |            |
|------|--|-------------|---|---|---|------------|
| 1240 |  | <b>SG29</b> | C | 2 | 2 | <b>RFF</b> |
|------|--|-------------|---|---|---|------------|

This segment group serves the referencing of a possible preceding offer or agreement.

|      |    |            |   |   |   |                       |
|------|----|------------|---|---|---|-----------------------|
| 1250 | 40 | <b>RFF</b> | M | 1 | 2 | <b>Reference data</b> |
|------|----|------------|---|---|---|-----------------------|

| Tag  | Name                 | St Format | Use/annotations  |
|------|----------------------|-----------|--|
| RFF  |                      |           |  |
| C506 | REFERENCE DATA       | M         |  |
| 1153 | Reference, qualifier | M an..3   | <b>ACE</b> <b>supplier's transaction/object/project/<br/>blanket purchase order number</b><br>Indicates the supplier's consecutive line item number for the call-off/object order.   |
| 1154 | Reference number     | M an..35  | Reference number referring to the qualifier selected in data element 1153. The supplier's consecutive line item number is only filled in if there is a reference to a current offer. |
| 1156 | Line item number     | M an..6   |  |

**Description:** In the RFF segment, numbers regarding documents that the order line item refers to are transferred.

**Example:** RFF+ACE:1:1'

# Segment descriptions

| Number | No | Segment | St | Max rep. | Level | Name |
|--------|----|---------|----|----------|-------|------|
|--------|----|---------|----|----------|-------|------|

1600      **SG39**      C      2      2      **ALC-SG41-SG42**

This segment group serves to transfer allowances and charges for order line items.

1610    41      **ALC**      M      1      2      **Allowances and charges**

| Tag  | Name                              | St Format | Use/annotations   |
|------|-----------------------------------|-----------|---|
| ALC  |                                   |           |   |
| 5463 | ALLOWANCES AND CHARGES, QUALIFIER | M an..3   | <b>A allowance</b><br><b>C charge</b>   |
| C552 |                                   | N         |   |
| 1230 |                                   | N         | Not used in the subset.   |
| 4471 |                                   | N         | Not used in the subset.   |
| 1227 |                                   | N         | Not used in the subset.   |
| C214 | SPECIAL SERVICES                  | M         |   |
| 7161 | Special services, coded           | M an..3   | The following codes are available:<br><b>FI monetary value per order</b><br><b>RAA discount rate</b><br>EURO values are absolute, fixed values and are appropriated in the final step of the chain calculation. |

**Description:** In the ALC segment, allowances and charges for individual line items are transferred.

**Example:** ALC+A++++RAA '

# Segment descriptions

| Number | No | Segment | St | Max rep. | Level | Name |
|--------|----|---------|----|----------|-------|------|
|--------|----|---------|----|----------|-------|------|

1670      **SG41**      C      1      3      **PCD**

This segment group serves the transfer of allowance and charge percentages.

1680    42      **PCD**      M      1      3      **Percentages**

| Tag  | Name                   | St Format | Use/annotations                                  |
|------|------------------------|-----------|--|
| PCD  |                        |           |  |
| C501 | PERCENTAGES            | M         |  |
| 5245 | Percentages, qualifier | M an..3   | <b>3 percentage rate</b>                         |
| 5482 | Percentage             | M n..10   | Indication of percentage with two decimal places |

**Description:** In the PCD segment, the percentage rate for allowances and charges is transferred.

**Example:** PCD+3:9'

# Segment descriptions

| Number  | No | Segment | St | Max rep. | Level | Name   |
|---|----|---------|----|----------|-------|--------|
| 1700  |    | SG42    | C  | 1        | 3     | MOA    |
| This segment group serves the transfer of allowances and charges as a fixed amount. |    |         |    |          |       |        |
| 1710  | 43 | MOA     | M  | 1        | 3     | Amount |

| Tag  | Name              | St Format | Use/annotations                             |
|------|-------------------|-----------|---|
| MOA  |                   |           |   |
| C516 | AMOUNT            | M         |   |
| 5025 | Amount, qualifier | M an..3   | 8 amount                                    |
| 5004 | Amount            | M n..18   | Allowance or charge with two decimal places |

**Description:** In the MOA segment, an allowance or charge is transferred as an amount.

**Example:** MOA+8 : 9 '

ORDERS

# Segment descriptions

---

| Number | No | Segment    | St | Max rep. | Level | Name                    |
|--------|----|------------|----|----------|-------|-------------------------|
| 2090   | 44 | <b>UNS</b> | M  | 1        | 0     | Section control segment |

| Tag  | Name                      | St Format | Use/annotations  |
|------|---------------------------|-----------|--|
| UNS  |                           |           |  |
| 0081 | SECTION IDENTIFIER, CODED | M a1      | Constant value:<br><b>S Separation of line item- and sum section</b> |

**Description:** The UNS segment is a service segment and marks the separation of line item- and sum section.

**Example:** UNS+S '

# Segment descriptions

| Number | No | Segment    | St | Max rep. | Level | Name                |
|--------|----|------------|----|----------|-------|---------------------|
| 2160   | 45 | <b>UNT</b> | M  | 1        | 0     | Message end segment |

| Tag  | Name                              | St Format | Use/annotations   |
|------|-----------------------------------|-----------|---|
| UNT  |                                   |           |   |
| 0074 | NUMBER OF SEGMENTS IN ONE MESSAGE | M n..6    | Number of segments transferred in this message, incl. segments UNH and UNT.   |
| 0062 | MESSAGE REFERENCE NUMBER          | M an..14  | The same reference number as in UNH / 0062 has to be entered here. Upon receipt of message, this number will be compared with the entry in the segment UNH. |

**Description:** In the UNT segment, the number of segments and a message reference number are transferred for a plausibility check.

**Example:** UNT+43+1 '

## Segment descriptions

---

| Number | No | Segment    | St | Max rep. | Level | Name                  |
|--------|----|------------|----|----------|-------|-----------------------|
| 0000   | 46 | <b>UNZ</b> | M  | 1        | 0     | User data end segment |

| Tag  | Name                    | St Format | Use/annotations  |
|------|-------------------------|-----------|--|
| UNZ  |                         |           |  |
| 0036 | DATA EXCHANGE COUNTER   | M n..6    | Here the number of messages within the user data frame UNB...UNZ is entered.   |
| 0020 | DATA EXCHANGE REFERENCE | M an..14  | Here the same reference number as in UNB / 0020 has to be entered. Upon receipt of the user data frame, this number is compared to the entry in the segment UNB. |

**Description:** In the UNZ segment, a data exchange counter and a data exchange reference can be transferred.

**Example:** UNZ+1+1 '



## Example messages

---

### Comprehensive example

UNA:+,? '  
UNB+UNOC:3+SENDER ID:65+RECIPIENT ID:65+150602:1510+1245'  
UNH+1+ORDERS:D:96B:UN:ITEK40'  
BGM+227+870.610B-11964287.002'  
DTM+137:20150602:102'  
FTX+ORI+++Please deliver definitely on 09/06/2015!!'  
NAD+SU+123456::ZZZ'  
NAD+WS+654321::ZZZ'  
CTA++:Sample, Joe'  
COM+Joe.Sample@customer.de:EM'  
COM+?+49 (09999) 999 - 999:FX'  
COM+?+49 (09999) 999 - 999:TE'  
NAD+DP+999::ZZZ++Joe::Sample+Any Street 16+Any City++12345+DE'  
CUX+2:EUR'  
LIN+100++4998772303148:EN'  
QTY+12:4:PCE'  
UNS+S'  
UNT+16+1'  
UNZ+1+1245'

### Detailed examples

Stock order with GLN and article number assigned by supplier

UNA:+,? '  
UNB+UNOC:3+SENDER GLN:14+RECIPIENT GLN:14+150521:1146+713'  
UNH+1+ORDERS:D:96B:UN:ITEK40'  
BGM+120+BE14010/XX000/1234'  
DTM+137:20150521:102'  
DTM+2:20150526:102'  
FTX+ORI+++with next warehouse delivery'  
NAD+SU+GLN supplier::9'  
NAD+WS+654321::ZZZ'  
CTA++:Sample, Joe'  
LIN+300++9999999:MF'  
IMD+++SP:::article short name'  
QTY+12:3,000:PCE'  
UNS+S'  
UNT+13+1'  
UNZ+1+713'

## ORDERS

# Example messages

---

Collective order and drop shipment

UNA:+,?'  
UNB+UNOC:3+SENDER ID:65+RECIPIENT ID:65+150602:1510+1245'  
UNH+1+ORDERS:D:96B:UN:ITEK40'  
BGM+447+197/471104'  
DTM+137:20150506:102'  
DTM+2:20150506:102'  
RFF+ACD:8870'  
NAD+SU+2013880::ZZZ'  
NAD+WS+18517::ZZZ'  
CTA++:Sample, Joe'  
COM+Joe.Sample@customer.de:EM'  
COM+?+49 (09999) 999 - 999:FX'  
COM+?+49 (09999) 999 - 999:TE'  
NAD+ST+++FIRMA & KLEIN:Haustechnik GmbH+Any Street 5B+Any City++99999+DE'  
LIN+10++F99999:MF'  
QTY+12:50:PCE'  
LIN+20++F88888:MF'  
QTY+12:50:PCE'  
UNS+S'  
UNT+18+1'  
UNZ+1+1245'