

# Implementation guidelines

## EDIFACT SUBSET

### EDITEC

## Instruction for returns



**Deutscher Großhandelsverband Haustechnik e.V.**



**ARGE Neue Medien**



**RETINS / D.07B**

**Version 3.5 / September 2010**

## Table of contents for the “Instruction for returns” subset

1	Introduction .....	3
2	Instructions for use .....	4
3	Message structure diagram .....	5
4	History .....	6
5	Message structure of the subset .....	7
<b>UNA</b>	K 1 Presetting of Separators .....	7
<b>UNB</b>	M 1 Usage Data Head Segment .....	8
<b>UNH</b>	M 1 Message Head Segment .....	10
<b>BGM</b>	M 1 Beginning of the Message .....	11
<b>DTM</b>	K 1 Date/Time/Period Data .....	12
<b>DOC</b>	K 1 Document/Message .....	13
<b>DTM</b>	K 1 Date/Time/Period Specifications .....	13
<b>NAD</b>	M 1 Name and Address .....	14
<b>CTA</b>	M 1 Communication partner .....	16
<b>COM</b>	K 4 Communication Link .....	16
<b>LIN</b>	M 1 Line Item Data .....	17
<b>RFF</b>	M 1 Reference Data .....	18
<b>CDI</b>	M 1 Article status .....	19
<b>DTM</b>	K 2 Date-/Time-/Period Specifications .....	20
<b>FTX</b>	K 1 Free Text .....	21
<b>UNT</b>	M 1 Message End Segment .....	22
<b>UNZ</b>	M 1 Usage Data End Segment .....	22

# 1 Introduction

The present implementation guidelines for the EDIFACT subset regarding the message type "Instruction for returns" was compiled by ITEK on behalf of Arbeitsgemeinschaft Neue Medien der deutschen Sanitärindustrie e.V. and Deutscher Großhandelsverband Haustechnik e.V.

**ITEK**

Technologiepark 19  
33100 Paderborn

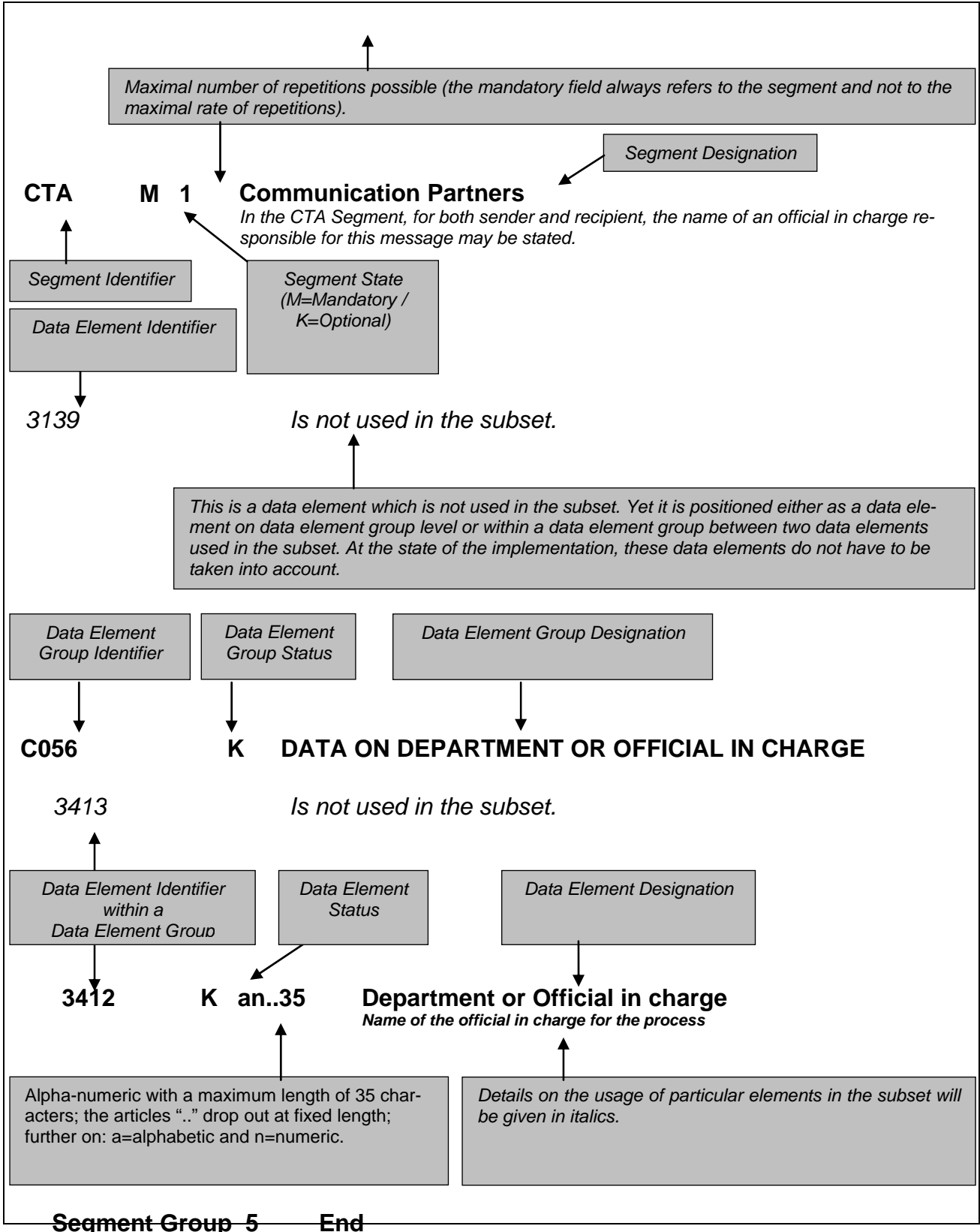
Phone no.: + 49 5251 1614 0  
Fax no.: + 49 5251 1614 99  
E-mail: editec@itekmbh.de

This EDIFACT subset is based on EDIFACT syntax version 3 and the following public documents:

- EDIFACT – Standardised message type "RETINS"
- UN/EDIFACT Directory 96B, UN/ECE/TRADE/WP.4
- EDIFACT Service segments application guidelines, draft DIN 16560 part 1, February 1994
- UN/EDIFACT code list D.97A

Paderborn, November 2010

## 2 Instructions for use





## 4 History

Alteration date	Segment	Alteration
18/12/2008		Draft version 0.9
04/06/2009		Version 1.0
04/06/2009	SG18 / CDI	Code list of instructions for returns completed
29/06/2009	SG18 / CDI	Code list of instructions for returns completed
29/06/2009	SG18 / DTM	Qualifiers included for return period from and return period until
01/09/2009		Version increased to 3.4

## 5 Message structure of the subset

### UNA K 1 Presetting of Separators

*In the UNA segment, separators, decimal marks and release indicators are predefined. It is defined only once and applies to the following messages until it is revoked. Consequently, it won't be transferred furthermore.*

*If needed, value :+,? '*

*: separates data elements in a data element group*

*+ separates segment designations, data element groups and data elements*

*, Decimal marker (comma)*

*? Release indicator, restores the original meaning of the mark that follows the release indicator.*

*Blank space, reserved for later applications*

*' Segment terminator*

<b>UNB</b>	M 1	<b>Usage Data Head Segment</b> <i>The UNB segment transfers data concerning syntax, sender/recipient of the interchange file, date and time of its creation, and a data exchange reference. Optionally, a password for the recipient may be included in the transfer as well.</i>
<b>S001</b>	M	<b>SYNTAX DESIGNATOR</b>
<b>0001</b>	M a4	Syntax Identifier <i>Constant Value:</i>
<i>“UNOC” EDIFACT syntax version C</i>		
<b>0002</b>	M n1	Syntax Version Number <i>Constant Value:</i>
<i>“3” EDIFACT syntax version 3</i>		
<b>S002</b>	M	<b>SENDER OF THE INTERCHANGE FILE</b>
<b>0004</b>	M an..35	Sender Designation <i>Sender Identifier (e. g. identification number in Telebox400)</i>
<b>0007</b>	K an..4	Participant Designation, Qualifier <i>This data element serves the definite specification of the participants. The following codes are available:</i>
<i>“52” Sender IBM/IE User “65” Sender Telebox400 User “ZZZ” Sender (other network operators) “14” Sender ILN</i>		
<b>S003</b>	M	<b>RECIPIENT OF THE INTERCHANGE FILE</b>
<b>0010</b>	M an..35	Recipient Designation <i>Recipient Identifier (e. g. identification number in Telebox400)</i>
<b>0007</b>	K an..4	Participant Designation, Qualifier <i>This data element serves the definite specification of the participants. The following codes are available:</i>
<i>“52” Recipient IBM/IE User “65” Recipient Telebox400 User “ZZZ” Recipient (other network operators) “14” Recipient ILN</i>		



<b>S004</b>	M		DATE/TIME OF CREATION
<b>0017</b>	M	n6	Date of Creation <i>Date of creation of the message by the sender in the format "YYMMDD". (This format is prescribed according to the EDIFACT syntax version 3).</i>
<b>0019</b>	M	n4	Time of Creation <i>Format: HHMM</i>
<b>0020</b>	M	an..14	DATA EXCHANGE REFERENCE <i>Number for each communication address (X.400, provider, ...) and message/data type, consistently rising in ascending order. The data exchange reference number serves as a plausibility test for the identification of double transmissions and failed transmissions. This task is fulfilled by the converter.</i>
<b>S005</b>	K		REFERENCE/PASSWORD OF THE RECIPIENT
<b>0022</b>	M	an..14	Reference or password of the recipient <i>A password grants access to the recipient's network or user system. The sender and recipient may agree upon a password bilaterally.</i>

<b>UNH</b>	M 1	Message Head Segment <i>In the UNH segment, a message is identified unambiguously. The EDITEC subset "Instruction for returns" is based on the message type "RETINS".</i>
<b>0062</b>	M an..14	MESSAGE REFERENCE NUMBER <i>In each transfer file, every message is consistently numbered in ascending order, beginning with "1". This task is fulfilled by the converter.</i>
<b>S009</b>	M	MESSAGE IDENTIFIER
<b>0065</b>	M an..6	Message Type Identifier <i>Constant Value:</i>
<b>"RETINS"</b> <i>Instruction for returns</i>		
<b>0052</b>	M an..3	Version Number of the Message Type <i>Constant Value:</i>
<b>"D"</b> <i>Draft Directory</i>		
<b>0054</b>	M an..3	Release Number of the Message Type <i>Constant Value:</i>
<b>"07B"</b> <i>UN/EDIFACT Draft Directory D.07B</i>		
<b>0051</b>	M an..2	Administrative Organisation, encoded <i>Constant Value:</i>
<b>"UN"</b> <i>United Nations UN/ECE/TRADE/WP.4</i>		
<b>0057</b>	K an..6	Operational Code of the Organisation in Charge <i>Constant Value:</i>
<b>"ITEK35"</b>		

<b>BGM</b>	M	1	Beginning of the Message <i>In the BGM segment the purpose and name of the message are defined.</i>	
<b>C002</b>	M		DOCUMENT/MESSAGE NAME	
<b>1001</b>	M	an..3	Document/Message Name, encoded <i>The following codes are available:</i> <table border="1" data-bbox="488 584 1445 622"><tr><td><i>"71E" Instruction for returns (GS1 Code)</i></td></tr></table>	<i>"71E" Instruction for returns (GS1 Code)</i>
<i>"71E" Instruction for returns (GS1 Code)</i>				
<b>1131</b>			<i>Is not used in the subset.</i>	
<b>3055</b>	M	an..3	Administrative Organisation, encoded <i>Constant Value:</i> <table border="1" data-bbox="488 819 1445 857"><tr><td><i>"89" Administrative organisation ITEK</i></td></tr></table>	<i>"89" Administrative organisation ITEK</i>
<i>"89" Administrative organisation ITEK</i>				
<b>1000</b>	M	an..35	Document/Message name <i>Denomination of the sales report</i>	
<b>C106</b>	K		DOCUMENT/MESSAGE IDENTIFICATION	
<b>1004</b>	K	an..35	Document/Message number <i>Number of the document, assigned by the sender.</i>	

<b>DTM</b>	K	1	Date/Time/Period Data <i>In the DTM segment the date of the sales report has to be transferred. In addition further data may be transferred.</i>				
<b>C507</b>	M		DATE/TIME/PERIOD DATA				
<b>2005</b>	M	an..3	Date/Time/Period Data, Qualifier <i>The following codes are available:</i> <table border="1"><tr><td>"137"</td><td><i>Date/Time of message</i></td></tr></table>	"137"	<i>Date/Time of message</i>		
"137"	<i>Date/Time of message</i>						
<b>2380</b>	K	an..35	Date/Time/Period Data <i>Date, formatted as indicated in data element 2379.</i>				
<b>2379</b>	K	an..3	Date/Time/Period Data, Format, Qualifier <i>The following codes are available:</i> <table border="1"><tr><td>"102"</td><td><i>Format: YYYYMMDD</i></td></tr><tr><td>"203"</td><td><i>Format: YYYYMMDDHHMM</i></td></tr></table>	"102"	<i>Format: YYYYMMDD</i>	"203"	<i>Format: YYYYMMDDHHMM</i>
"102"	<i>Format: YYYYMMDD</i>						
"203"	<i>Format: YYYYMMDDHHMM</i>						

**Segment group 1****K 1****DOC****K 1****Document/Message**

*This segment serves the indication of the announcement for returns.*

**C002****M****DOCUMENT/MESSAGE****1001****M an..3****Document/Message Type, Qualifier**

*The following codes are available:*

<b>"70E"</b>	<i>Number of the announcement for returns</i>
--------------	---

1131

*Is not used in the subset.*

**3055****K an..3****Administrative Organisation, encoded**

*Constant Value:*

<b>"89"</b>	<i>Administrative organisation ITEK</i>
-------------	---

**1000****K an..35****Announcement number****DTM****K 1****Date/Time/Period Specifications**

*This segment is used for transferring date specifications referring to the announcement for returns.*

**C507****M****DATE-/TIME-/PERIOD SPECIFICATIONS****2005****M an..3****Date-/Time-/Period Specifications, Qualifier**

*Constant Value:*

<b>"137"</b>	<i>Document date</i>
--------------	----------------------

**2380****K an..35****Date-/Time-/Period Specifications**

*Date, formatted as indicated in data element 2379.*

**2379****K an..3****Date-/Time-/Period Specifications, Format, Qualifier**

*The following codes are available:*

<b>"102"</b>	<i>YYYYMMDD</i>
<b>"203"</b>	<i>YYYYMMDDHHMM</i>

**Segment group 1 End**

**Segment group 3            M    2**

This segment group contains the NAD segment and segment groups 3 and 4 and serves the indication of the partners involved in the message and their contact persons.

**NAD            M    1            Name and Address**

*In the NAD segment data concerning the identification of the partners involved as well as important address data are transferred.*

**3035            M    an..3    PARTNER, QUALIFIER**

*The following codes are available:*

"SU"	Supplier/Manufacturer (Industry)
"WS"	Wholesaler

**C082            K            IDENTIFICATION OF THE PARTNER****3039            M    an..35    Partner Identification Number, encoded**

*In dependence of the qualifier stated above, the identification number of the partner is stated here.*

1131            *Is not used in the subset.*

**3055            K    an..3    Administrative Organisation, encoded**

*The following codes are available:*

"9"	EAN (CCG as the German issuer of the ILN numbers)
"ZZZ"	bilaterally agreed upon (customer- and supplier numbers)

C058            *IS NOT USED IN THE SUBSET.*

**C080            K            NAME OF THE PARTNER****3036            M    an..35    Name 1 of the partner**  
*Name 1 of the partner.***3036            K    an..35    Name 2 of the partner**  
*Name 2 of the partner.***3036            K    an..35    Name of the partner**  
*Name 3 of the partner.*

**C059** K STREET

**3042** M an..35 Street and house number  
*Building name/number and street name*

**3164** K an..35 LOCATION

C819 IS NOT USED IN THE SUBSET.

3229 IS NOT USED IN THE SUBSET.

**3251** K an..9 POSTAL CODE

**3207** K an..3 COUNTRY, ENCODED

*The most important country codes according to ISO 3166 (the postal codes have to be given on the delivery note papers):*

"BE"	Belgium
"BG"	Bulgaria
"DK"	Denmark
"DE"	Germany
"FI"	Finland
"FR"	France
"GR"	Greece
"GB"	Great Britain
"IE"	Ireland
"IT"	Italy
"CA"	Canada
"LU"	Luxembourg
"NL"	Netherlands
"NO"	Norway
"AT"	Austria
"PT"	Portugal
"SE"	Sweden
"CH"	Switzerland
"ES"	Spain
"TR"	Turkey
"US"	USA

**Segment group 5            K    1**

This segment group contains the CTA segment for the indication of a contact person and the COM segment for the indication of a communication link with the contact person.

**CTA        M    1        Communication partner**  
*In the CTA segment the name of the respective official in charge responsible for this message may be transferred for both sender and recipient.*

3139                        *IS NOT USED IN THE SUBSET.*

**C056        K                DATA ON THE DEPARTMENT OR THE OFFICIAL IN CHARGE**

3413                        Is not used in the subset.

**3412        K    an..35    Department or Official in Charge**  
*Name of the official or department in charge.*

**COM        K    4                Communication Link**  
*A segment for the indication of the communication number and type of the official in charge or the department referred to in the CTA segment.*

**C076        M                COMMUNICATION LINK**

**3148        M    an..512    Communication Number**

**3155        M    an..3        Communication Channel/Service, Qualifier**  
*The following codes are available:*

<i>"AH"</i>	<i>Internet Address (World Wide Web)</i>
<i>"EM"</i>	<i>E-Mail</i>
<i>"FX"</i>	<i>Facsimile</i>
<i>"TE"</i>	<i>Telephone</i>

**Segment group 5            End**

**Segment group 3            End**



**Segment group 11      K    9999****LIN      M    1      Line Item Data**

*In the LIN segment the article number of the article to be returned is transferred following a current serial number.*

**1082      K    n..6      LINE ITEM NUMBER**  
*Current serial line item number.*

1229                      *IS NOT USED IN THE SUBSET.*

**C212      M              PRODUCT IDENTIFICATION**

**7140      M    an..35      Goods-/Service Number**  
*Article number of the return article*

**7143      M    an..3      Goods-/Service Number, encoded**  
*The following codes are available:*

<i>"MF"</i>	<i>Manufacturer's article number</i>
<i>"BP"</i>	<i>Wholesaler's article number</i>

**Segment group 13      M    1**

This segment group contains the RFF segment for referencing the line item with line items from previous documents.

**RFF      M    1      Reference Data**

*In the RFF segment the line item number within the announcement for returns is transferred.*

**C506      M      REFERENCE DATA****1153      M    an..3    Reference, Qualifier**

*The following codes are available:*

<i>"LJ"</i>	<i>Line item number in the announcement for returns</i>
-------------	---

**1154      K    an..35    Reference number**

*Reference number referring to the qualifier chosen in data element 1153.*

**Segment group 13 End**



**DTM**      K    2      **Date-/Time-/Period Specifications**

*In the DTM segment delivery date specifications deviating from the head segment can be given for individual line items. The aim is to indicate individual delivery dates on a daily basis.*

C507      M      **DATE-/TIME-/PERIOD SPECIFICATIONS**2005      M    an..3    **Date-/Time-/Period Specifications**

*The following codes are available:*

"200"	<i>Pick-up date/time</i>
"234"	<i>Earliest pick-up date/time</i>
"235"	<i>Latest pick-up date/time</i>
"63"	<i>Return period until</i>
"64"	<i>Return period from</i>

2380      K    an..35    **The following codes are available**

*Date, formatted as indicated in data element 2379.*

2379      K    an..3    **Date-/Time-/Period Specifications, Format, Qualifier**

*The following codes are available:*

"102"	<i>YYYYMMDD (year, month, day)</i>
"203"	<i>YYYYMMDDHHMM (year, month, day, hour, minute)</i>

**FTX**      K    1      Free Text

*In the FTX segment an additional text referring to the return of goods may be transferred.*

4451      M    an..3    TEXT, QUALIFIER

*The following codes are available:*

"AAI"	General Information
"NAI"	Refusal information

4453                      *IS NOT USED IN THE SUBSET.*

C107                      *IS NOT USED IN THE SUBSET.*

C108      K              FREE TEXT

4440      M    an..70    Free Text

4440      K    an..70    Free Text

4440      K    an..70    Free Text

4440      K    an..70    Free Text

4440      K    an..70    Free Text

**Segment group 11                      End**

<b>UNT</b>	M 1	<b>Message End Segment</b> <i>In the UNT segment the number of segments and a message reference number are transferred for the purpose of a plausibility verification.</i>
<b>0074</b>	M n..6	<b>NUMBER OF SEGMENTS IN A MESSAGE</b> <i>Number of segments transferred with this message, including the UNH and UNT segments.</i>
<b>0062</b>	M an..14	<b>MESSAGE REFERENCE NUMBER</b> <i>Here, the same reference number as in UNH / 0062 has to be entered. Upon receipt of message, this number is compared to the entry in the UNH segment.</i>
<b>UNZ</b>	M 1	<b>Usage Data End Segment</b> <i>In the UNZ segment a data exchange counter and a data exchange reference may be transferred.</i>
<b>0036</b>	M n..6	<b>DATA EXCHANGE COUNTER</b> <i>Here, the number of messages is entered in the usage data frame UNB...UNZ.</i>
<b>0020</b>	M an..14	<b>DATA EXCHANGE REFERENCE</b> <i>The same reference number as in UNB / 0020 has to be entered here. Upon receipt of message, this number is compared to the entry in the UNB segment.</i>