

**Implementation policy  
to  
EDIFACT-SUBSET  
EDITEC  
DESADV**

**DESADV  
Version 4.2**

# Table of contents

---

Introduction .....	3
Message Struktur .....	4
Message Diagramm .....	6
Segments .....	12
Example .....	61

# Introduction

---

This implementation guideline for the EDIFACT subset 'Delivery Notification' was created by ITEK on behalf of the Working Group for New Media in the German Sanitary Industry (Arbeitsgemeinschaft Neue Medien der deutschen Sanitärindustrie e.V.) and the German Wholesale Association for Building Services (Deutscher Großhandelsverband Haustechnik e.V.).

ITEK  
Technologiepark 20  
33100 Paderborn

Telefon: (0 52 51) 16 14 -0  
Telefax: (0 52 51) 16 14 -99  
E-Mail: editec@itekmbh.de

The EDIFACT subset is based on EDIFACT syntax version 3 and the following public documents:

- EDIFACT – Uniform message type 'DESADV'
- UN/EDIFACT Directory 96B, UN/ECE/TRADE/WP.4
- EDIFACT Application Guideline Service Segments, Draft DIN 16560 Part 1, February 1994
- UN/EDIFACT Code List D.97A

Paderborn, November 2025

# Message Structure

UNA	1	M	1	- Delimiter Specification
UNB	2	M	1	- User Data Header Segment
UNH	3	M	1	- Message Header Segment
BGM	4	M	1	- Start Of The Message
DTM	5	M	1	- Date of the document
DTM	6	M	3	- Delivery date / time
SG2		C	1	- Freight Forwarder
NAD	7	M	1	- Name and Address
SG3		C	1	- RFF
RFF	8	M	1	- Reference Details
SG4		C	1	- CTA-COM
CTA	9	M	1	- Communication Partner
COM	10	C	3	- Communication link
SG2		C	1	- Route Address
NAD	11	M	1	- Name and Address
SG3		C	1	- RFF
RFF	12	M	1	- Reference Details
SG4		C	1	- CTA-COM
CTA	13	M	1	- Communication partner
COM	14	C	3	- Communication link
SG2		M	1	- Manufacturer / Supplier
NAD	15	M	1	- Name and Address
SG3		C	2	- RFF
RFF	16	M	1	- Reference Details
SG4		C	1	- CTA-COM
CTA	17	M	1	- Communication partner
COM	18	C	3	- Communication link
SG2		M	1	- Wholesaler
NAD	19	M	1	- Name and Address
SG3		C	1	- RFF
RFF	20	M	1	- Reference Details
SG4		C	1	- CTA-COM
CTA	21	M	1	- Trading Partner
COM	22	C	3	- Communication link
SG2		C	1	- Goods recipient
NAD	23	M	1	- Name and Address
SG3		C	1	- RFF
RFF	24	M	1	- Reference Details
SG4		C	1	- CTA-COM
CTA	25	M	1	- Communication Partner
COM	26	C	3	- Communication link
SG6		M	1	- TDT
TDT	27	M	1	- Transport data
SG10		M	9999	- CPS-SG11-SG15
CPS	28	M	1	- Packaging hierarchy of the consignment
SG11		C	9999	- PAC-MEA-SG13
PAC	29	M	1	- Parcel/Packaging
MEA	30	C	5	- Dimensions and Weights
SG13		C	2	- PCI-SG14
PCI	31	M	1	- Package Identification
SG14		C	1	- GIN
GIN	32	M	1	- Product Identification Number
SG15		C	9999	- LIN-PIA-IMD-QTY-SG16-SG23

St = Status

EDIFACT: M=Mandatory, C=Conditional

Application: R=Required, O=Optional, D=Dependent, A=Advised, N=Not used, X=Not used

# Message Structure

---

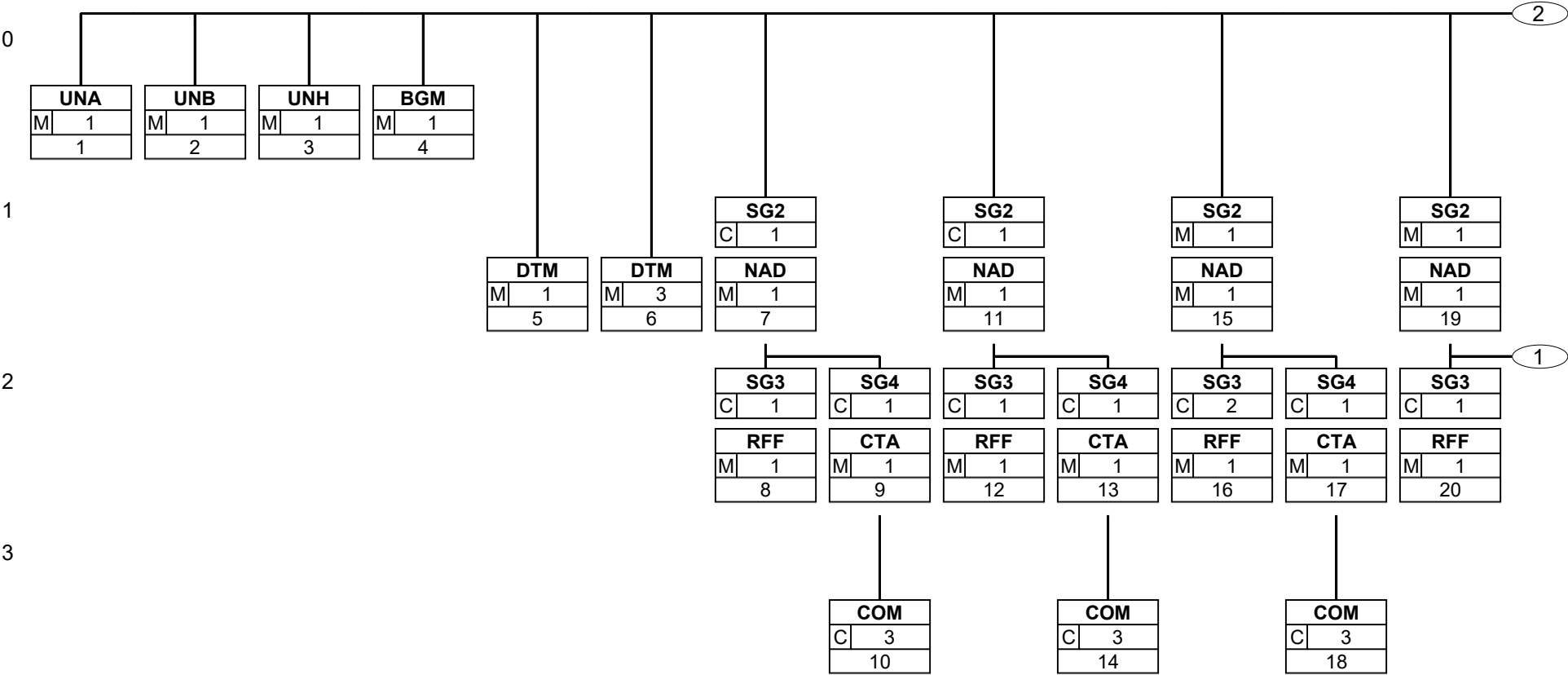
LIN	33	M	1	- Position Data
PIA	34	C	10	- Additional product identification
IMD	35	C	2	- Specification of the item
IMD	36	C	8	- Additional text for the item
QTY	37	M	1	- Quantity
SG16		M	99	- Reference to the order
RFF	38	M	1	- Reference Details
DTM	39	C	1	- Date/Time/Period Details
SG16		C	2	- RFF-DTM
RFF	40	M	1	- Reference Details
DTM	41	C	1	- Date/Time/Period Details
SG23		C	1	- Partial delivery with subsequent delivery
QVR	42	M	1	- Quantity discrepancies
DTM	43	C	1	- Date/Time/Period Details
SG23		C	1	- Over-delivery / Partial delivery without follow-up delivery
QVR	44	M	1	- Quantity discrepancies
UNT	45	M	1	- Message End Segment
UNZ	46	M	1	- Data Segment End

St = Status

EDIFACT: M=Mandatory, C=Conditional

Application: R=Required, O=Optional, D=Dependent, A=Advised, N=Not used, X=Not used

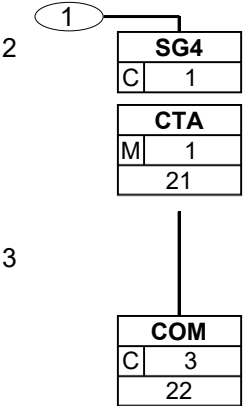
# Message Structure



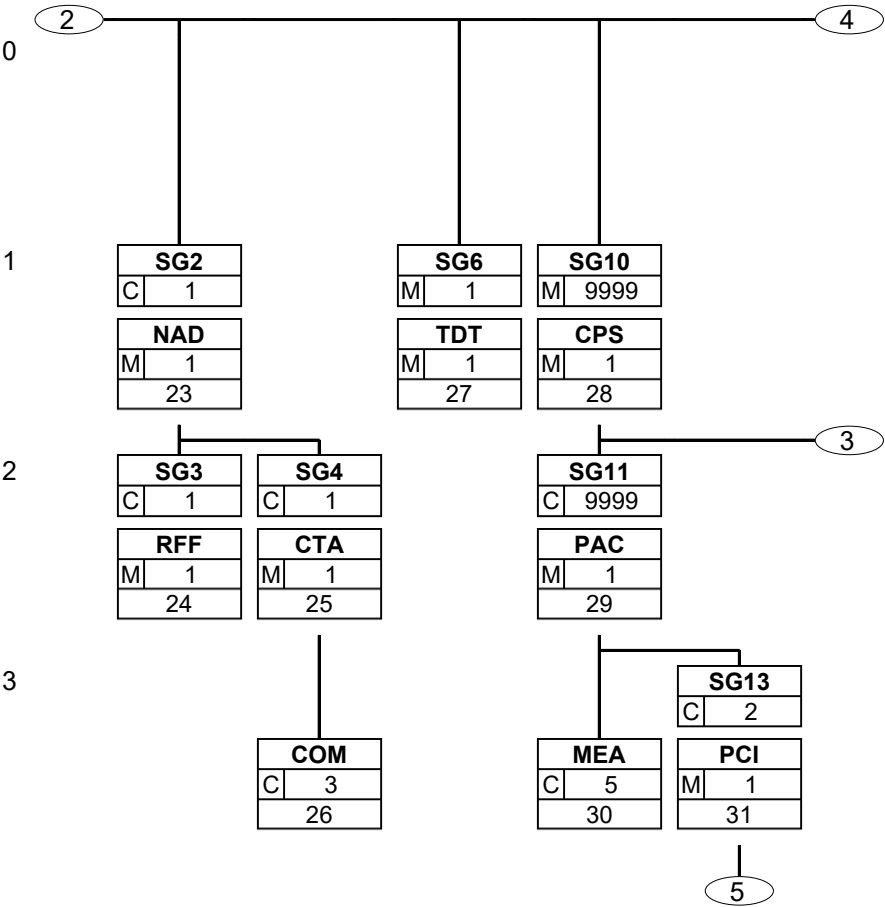
Status: M=Mandatory, C=Conditional, R=Required, O=Optional, D=Dependent, A=Advised, N=Not used, X=Not used

# Message Structure

---



# Message Structure

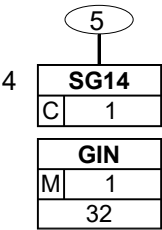


Status: M=Mandatory, C=Conditional, R=Required, O=Optional, D=Dependent, A=Advised, N=Not used, X=Not used

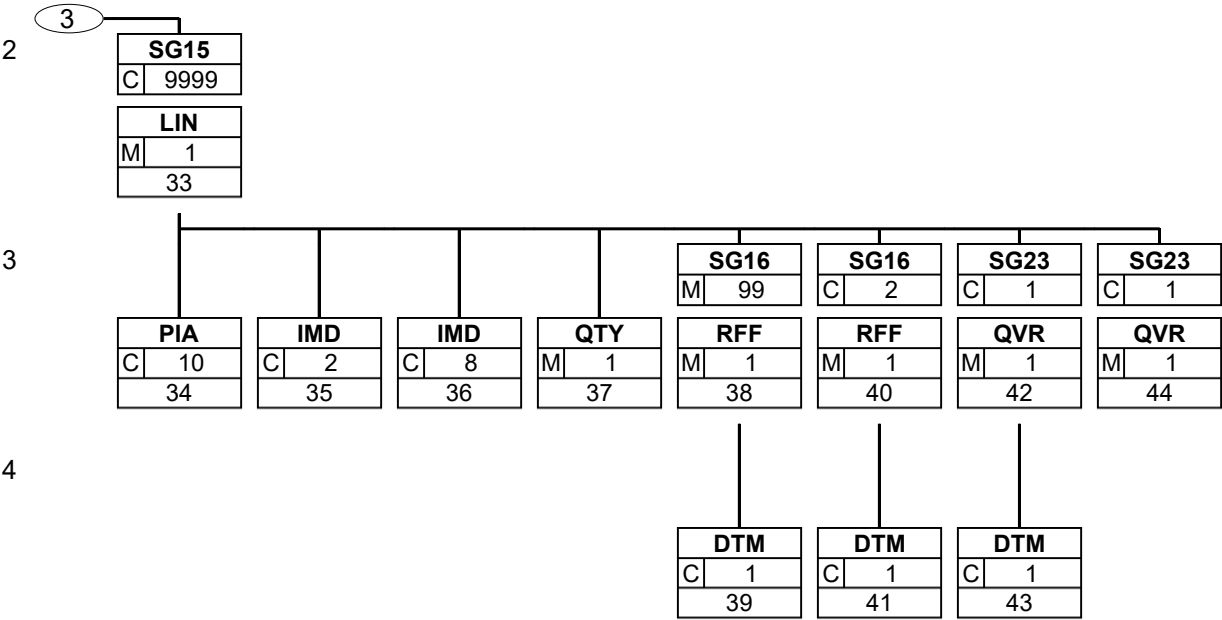


# Message Structure

---

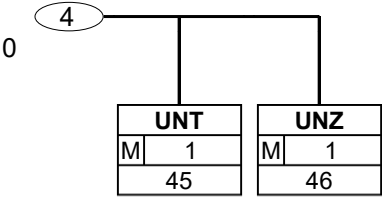


# Message Structure



# Message Structure

---



# Segment descriptions

Number	No	Segment	St	MaxRep.	Level	Name
--------	----	---------	----	---------	-------	------

0000	1	<b>UNA</b>	M	1	0	<b>Delimiter Specification</b>
------	---	------------	---	---	---	--------------------------------

Tag	Name	St Format	Usage / Comments
UNA			
UNA1	: Separator	M an1	Separates data elements within a data element group. <b>: Constant</b>
UNA2	=+@ Seperator	M an1	Separates segment identifiers, data element groups, and data elements. <b>+ Constant</b>
UNA3	, Decimal mark (comma)	M an1	<b>, Constant</b>
UNA4	? Release character	M an1	Restores the original meaning to the character following the release character. <b>? Constant</b>
UNA5	Spaces	M an1	Reserved for future applications
UNA6	Segment terminator	M an1	<b>' Constant</b>

**Description:** In the UNA segment, the delimiter, decimal, and release characters are defined. These characters are defined only once and apply to subsequent messages until further notice. Therefore, they are not transmitted again.

**Example:** UNA: +, ? ' '

No = Consecutive segment number  
 MaxOcc = Maximum occurrence of the segment/group  
 Counter = Counter of segment/group within the standard

St = Status  
 EDIFACT: M=Mandatory, C=Conditional  
 User specific: R=Required, O=Optional, D=Dependent,  
 A=Advised, N=Not used

# Segment descriptions

Number	No	Segment	St	MaxRep.	Level	Name
--------	----	---------	----	---------	-------	------

0000 2 **UNB** M 1 0 **User Data Header Segment**

Tag	Name	St	Format	Usage / Comments
UNB				
S001	SYNTAX IDENTIFIER	M		
0001	Syntax identifier	M	a4	CONSTANT VALUE: <b>UNOC EDIFACT syntax character set C</b>
0002	Syntax version number	M	n1	CONSTANT VALUE: <b>3 EDIFACT Syntax Version 3</b>
S002	SENDER OF THE TRANSMISSION FILE	M		
0004	Sender Identification	M	an..35	Sender's identifier (e.g., identification number in Telebox400)
0007	Participant Identifier, Qualifier	M	an..4	This data element is used for the unique specification of the participants. The following codes are available: <b>14 Sender GLN</b> <b>65 Sender Telebox400 user</b> <b>SHK SHK-Mail</b> <b>ZZZ Sender (additional network operators)</b>
S003	RECIPIENT OF THE TRANSMISSION FILE	M		
0010	Recipient designation	M	an..35	Recipient's identifier (e.g., identification number in Telebox400)
0007	Participant Identifier, Qualifier	M	an..4	This data element is used for the unique specification of the participants. The following codes are available: <b>14 Recipient GLN</b> <b>65 Recipient Telebox400 user</b> <b>SHK SHK-Mail</b> <b>ZZZ Recipient (additional network operators)</b>
S004	DATE/TIME OF CREATION	M		
0017	Date of creation	M	n6	Date of message creation at the sender in the format YYMMDD (This format is prescribed by the EDIFACT application guideline for service segments).
0019	Time of creation	M	n4	Format: HHMM
0020	DATA EXCHANGE REFERENCE	M	an..14	Continuously ascending number for each communication address (X.400, provider, etc.) and message type. The data exchange reference number is used for plausibility checks to identify duplicate and erroneous transmissions. This task is performed by the converter.
S005		N		
0022		N		Not used in the subset.
0026		N		Not used in the subset.
0029		N		Not used in the subset.
0031		N		Not used in the subset.
0032		N		Not used in the subset.
0035	Test indicator	C	n1	Test indicator

**Description:**

In the UNB segment, details regarding the syntax, the sender/recipient of the transmission file, the date/time of creation, and a data exchange reference are transmitted.

**Example:**

UNB+UNOC:3+4,01235E?+12:14+4,01235E?+12:14+131014:1154+1+++++1'

No = Consecutive segment number  
MaxOcc = Maximum occurrence of the segment/group  
Counter = Counter of segment/group within the standard

St = Status  
EDIFACT: M=Mandatory, C=Conditional  
User specific: R=Required, O=Optional, D=Dependent,  
A=Advised, N=Not used

# Segment descriptions

Number	No	Segment	St	MaxRep.	Level	Name
0010	3	<b>UNH</b>	M	1	0	<b>Message Header Segment</b>

Tag	Name	St	Format	Usage / Comments
UNH				
0062	MESSAGE REFERENCE NUMBER	M	an..14	In each transmission file, each message is numbered consecutively in ascending order starting with 1. This task is performed by the converter.
S009	MESSAGE IDENTIFICATION	M		
0065	Message Type Identification	M	an..6	Constant value: <b>DESADV Delivery notification</b>
0052	Message type version number	M	an..3	Constant value: <b>D Draft Directory (Directory Draft)</b>
0054	Release number of the message type	M	an..3	Constant value: <b>96B UN/EDIFACT Draft Directory D.96B</b>
0051	Managing organisation, coded	M	an..2	Constant value: <b>UN United Nations UN/ECE/TRADE/WP.4</b>
0057	Application code of the responsible organisation	M	an..6	Constant value: <b>ITEK42 Version 4.2</b>

**Description:** In the UNH segment, a message in a transmission file is uniquely identified. The EDITEC subset Delivery Notification is based on the message type DESADV.

**Example:** UNH+1+DESADV:D:96B:UN:ITEK42 '

No = Consecutive segment number  
 MaxOcc = Maximum occurrence of the segment/group  
 Counter = Counter of segment/group within the standard

St = Status  
 EDIFACT: M=Mandatory, C=Conditional  
 User specific: R=Required, O=Optional, D=Dependent,  
 A=Advised, N=Not used

# Segment descriptions

Number	No	Segment	St	MaxRep.	Level	Name
0020	4	<b>BGM</b>	M	1	0	Start Of The Message

Tag	Name	St	Format	Usage / Comments
BGM				
C002	DOCUMENT/MESSAGE NAME	M		
1001	Document/Message Name, Coded	M	an..3	THE FOLLOWING CODES ARE AVAILABLE: <b>22E Delivery notification due to an order generated in the industry</b> <b>270 only delivery note details</b> <b>351 Delivery notification (incl. delivery note details)</b>
C106	DOCUMENT/MESSAGE IDENTIFICATION	M		
1004	Document/Message Number	M	an..35	Document number assigned by the sender.

**Description:** In the BGM segment, the use, name, and number of the message are specified.

**Note:**

- Multiple delivery notifications can be transmitted on a single day.
- Separate delivery notifications are issued for direct shipments (different delivery address in the NAD).
- If only delivery note details are sent without additional information, code 270 is used.

**Implementation note:** For a delivery notification related to an order confirmation, which was generated due to an order placed by the industry, the ORDRSP 4.0 subset should be used at a minimum for transmitting the order confirmation. Only from this version onwards is the specification of partial deliveries allowed. If an older subset version is used, the delivery quantity exceeds the ordered quantity in the second or subsequent delivery notifications. This may lead to issues in the automatic processing at the wholesale level.

**Example:** BGM+351+1 '

**Open questions:** [Check implementation note](#)

No = Consecutive segment number  
MaxOcc = Maximum occurrence of the segment/group  
Counter = Counter of segment/group within the standard

St = Status  
EDIFACT: M=Mandatory, C=Conditional  
User specific: R=Required, O=Optional, D=Dependent,  
A=Advised, N=Not used

# Segment descriptions

Number	No	Segment	St	MaxRep.	Level	Name
--------	----	---------	----	---------	-------	------

0030	5	<b>DTM</b>	M	1	1	Date of the document
------	---	------------	---	---	---	----------------------

Tag	Name	St	Format	Usage / Comments
DTM				
C507	DATE SPECIFICATIONS	M		
2005	Date, Qualifier	M	an..3	The following codes are available: <b>137 Document / message date</b>
2380	Date specifications	M	an..35	Date of delivery notification, formatted as shown in data element 2379.
2379	Date specifications, format, qualifier	M	an..3	The following codes are available: <b>102 Format: YYYYMMDD</b>

**Description:** In the DTM segment, the date of the delivery notification must be transmitted.

**Example:** DTM+137:20141012:102 '

No = Consecutive segment number  
MaxOcc = Maximum occurrence of the segment/group  
Counter = Counter of segment/group within the standard

St = Status  
EDIFACT: M=Mandatory, C=Conditional  
User specific: R=Required, O=Optional, D=Dependent,  
A=Advised, N=Not used



# Segment descriptions

Number	No	Segment	St	MaxRep.	Level	Name
--------	----	---------	----	---------	-------	------

0030 6 **DTM** M 3 1 **Delivery date / time**

Tag	Name	St	Format	Usage / Comments
DTM				
C507	DATE/TIME/PERIOD DETAILS	M		
2005	Date/Time/Period Details, Qualifiers	M	an..3	The following codes are available: <b>133 Departure date</b> <b>17 fixed delivery date</b> <b>63 Latest delivery date/time</b> <b>64 Delivery date/time, earliest</b>
2380	Date/Time/Period Details	M	an..35	Date/time of delivery notification, formatted as shown in data element 2379.
2379	Date/Time/Period Details, Format, Qualifier	M	an..3	The following codes are available: <b>102 Format: YYYYMMDD</b>

**Description:** In the DTM segment, the date of the delivery time can be transmitted.

**Implementation note:** Where possible, a fixed delivery date should be provided, as only this gives an accurate indication of when the goods will arrive at the wholesaler.

**Example:** DTM+133:20141013:102 '

No = Consecutive segment number  
MaxOcc = Maximum occurrence of the segment/group  
Counter = Counter of segment/group within the standard

St = Status  
EDIFACT: M=Mandatory, C=Conditional  
User specific: R=Required, O=Optional, D=Dependent,  
A=Advised, N=Not used

# Segment descriptions

Number	No	Segment	St	MaxRep.	Level	Name
--------	----	---------	----	---------	-------	------

0100		<b>SG2</b>	C	1	1	<b>Freight Forwarder</b>
------	--	------------	---	---	---	--------------------------

This segment group includes the NAD segment as well as segment groups 3 and 4, and is used to specify the partners involved in the message and their contacts.

0110	7	<b>NAD</b>	M	1	1	<b>Name and Address</b>
------	---	------------	---	---	---	-------------------------

Tag	Name	St	Format	Usage / Comments
NAD				
3035	PARTNER, QUALIFIER	M	an..3	The following codes are available: <b>CA Forwarding Agent</b>
C082	IDENTIFICATION OF THE PARTNER	C		
3039	Partner identification number, coded	M	an..35	Depending on the qualifier mentioned above, the partner's identification number is provided here.
1131		N		Not used in the subset.
3055	Managing organisation, coded	M	an..3	The following codes are available: <b>9 GLN (GS1 as the German issuer of GLN numbers)</b> <b>ZZZ bilaterally agreed (customer or supplier numbers)</b>
C058		N		
3124		N		Not used in the subset.
C080	PARTNER NAME	C		
3036	Partner Name 1	M	an..35	Partner Name 1.
3036	Partner Name 2	C	an..35	Partner Name 2.
3036	Partner Name 3	C	an..35	Partner Name 3.
C059	STREET	C		
3042	Street and house number	M	an..35	Building name/number and street name
3164	LOCATION	C	an..35	
3229		N		Not used in the subset.
3251	POSTCODE	C	an..9	
3207	COUNTRY, CODED	C	an..3	The most important country codes according to ISO 3166 (postal codes must be indicated on the delivery note papers): <b>AT Austria</b> <b>BE Belgium</b> <b>BG Bulgaria</b> <b>CA Canada</b> <b>CH Switzerland</b> <b>DE Germany</b> <b>DK Denmark</b> <b>ES Spain</b> <b>FI Finland</b> <b>FR France</b> <b>GB United Kingdom</b> <b>GR Greece</b> <b>IE Ireland</b> <b>IT Italy</b> <b>LU Luxembourg</b> <b>NL Netherlands</b> <b>NO Norway</b> <b>PT Portugal</b> <b>SE Sweden</b> <b>TR Turkey</b> <b>US USA</b>

**Description:** In the NAD segment, details for identifying the involved partners as well as key address information are transmitted.

**Implementation note:** At least the data element group C082 or the data element groups C080, C059, and the data elements 3164, 3251, and 3207 must be transmitted.

No = Consecutive segment number  
MaxOcc = Maximum occurrence of the segment/group  
Counter = Counter of segment/group within the standard

St = Status  
EDIFACT: M=Mandatory, C=Conditional  
User specific: R=Required, O=Optional, D=Dependent,  
A=Advised, N=Not used

DESADV

# Segment descriptions

---

**Example:** NAD+CA+4,01235E?+12::9++Max:Maximilian:Mustermann+Musterstr. 16+Musterstadt++12345+DE'

No = Consecutive segment number	St = Status
MaxOcc = Maximum occurrence of the segment/group	EDIFACT: M=Mandatory, C=Conditional
Counter = Counter of segment/group within the standard	User specific: R=Required, O=Optional, D=Dependent, A=Advised, N=Not used

# Segment descriptions

Number	No	Segment	St	MaxRep.	Level	Name
--------	----	---------	----	---------	-------	------

0130		<b>SG3</b>	C	1	2	<b>RFF</b>
------	--	------------	---	---	---	------------

This segment group includes the RFF segment. It contains references to the partner specified in the NAD segment.

0140	8	<b>RFF</b>	M	1	2	<b>Reference Details</b>
------	---	------------	---	---	---	--------------------------

Tag	Name	St	Format	Usage / Comments
RFF				
C506	REFERENCE DETAILS	M		
1153	Reference, Qualifier	M	an..3	Code does not correspond to any UN/EDIFACT code list. Constant value: <b>API Additional partner identification* (e.g. own identification number with the partner)</b>
1154	Reference Number	M	an..35	

**Description:** This segment is used to specify references relating to the partner identified in the preceding NAD segment. This could be, for example, one's own identification number with the partner as a supplement to the GLN number.

**Example:** RFF+API:12345 '

No = Consecutive segment number  
MaxOcc = Maximum occurrence of the segment/group  
Counter = Counter of segment/group within the standard

St = Status  
EDIFACT: M=Mandatory, C=Conditional  
User specific: R=Required, O=Optional, D=Dependent,  
A=Advised, N=Not used

# Segment descriptions

Number	No	Segment	St	MaxRep.	Level	Name
--------	----	---------	----	---------	-------	------

0160      **SG4**      C      1      2      **CTA-COM**

This segment group contains the CTA segment for specifying the contact person and the COM segment for indicating the communication connection.

0170      9      **CTA**      M      1      2      **Communication Partner**

Tag	Name	St	Format	Usage / Comments
CTA				
3139		N		Not used in the subset.
C056	DEPARTMENT OR PROCESSOR	M		
3413		N		Not used in the subset.
3412	Department or Processor	M	an..35	Name of the clerk or department.

**Description:** In the CTA segment, the name of a clerk responsible for the process can be transmitted for both the sender and the receiver.

**Example:** CTA++:Max Mustermann '

No = Consecutive segment number  
MaxOcc = Maximum occurrence of the segment/group  
Counter = Counter of segment/group within the standard

St = Status  
EDIFACT: M=Mandatory, C=Conditional  
User specific: R=Required, O=Optional, D=Dependent,  
A=Advised, N=Not used

# Segment descriptions

Number	No	Segment	St	MaxRep.	Level	Name
--------	----	---------	----	---------	-------	------

0160      **SG4**      C      1      2      **CTA-COM**

This segment group contains the CTA segment for specifying the contact person and the COM segment for indicating the communication connection.

0180    10      **COM**      C      3      3      **Communication link**

Tag	Name	St	Format	Usage / Comments
COM				
C076	COMMUNICATION CONNECTION	M		
3148	Communication number	M	an..512	
3155	Communication channel/service, qualifier	M	an..3	The following codes are available: <b>EM E-mail</b> <b>FX Fax</b> <b>TE Telephone</b>

**Description:** A segment for specifying the communication number and type for the contact or department indicated in the CTA segment.

**Example:** COM+max\_mustermann@e\_mail.de:EM'

No = Consecutive segment number  
MaxOcc = Maximum occurrence of the segment/group  
Counter = Counter of segment/group within the standard

St = Status  
EDIFACT: M=Mandatory, C=Conditional  
User specific: R=Required, O=Optional, D=Dependent,  
A=Advised, N=Not used

# Segment descriptions

Number	No	Segment	St	MaxRep.	Level	Name
--------	----	---------	----	---------	-------	------

0100      **SG2**      C      1      1      **Route Address**

This segment group includes the NAD segment as well as segment groups 3 and 4, and is used to specify the partners involved in the message and their contacts.

0110    11      **NAD**      M      1      1      **Name and Address**

Tag	Name	St	Format	Usage / Comments
NAD				
3035	PARTNER, QUALIFIER	M	an..3	The following codes are available: <b>ST Direct delivery route</b>
C082	IDENTIFICATION OF THE PARTNER	C		
3039	Partner identification number, coded	M	an..35	Depending on the qualifier mentioned above, the partner's identification number is provided here.
1131		N		Not used in the subset.
3055	Managing organisation, coded	C	an..3	The following codes are available: <b>9 GLN (GS1 as the German issuer of GLN numbers)</b> <b>ZZZ bilaterally agreed (customer or supplier numbers)</b>
C058		N		
3124		N		Not used in the subset.
C080	PARTNER NAME	M		
3036	Partner Name 1	M	an..35	Partner Name 1
3036	Partner Name 2	C	an..35	Partner Name 2.
3036	Partner Name 3	C	an..35	Partner Name 3.
C059	STREET	M		
3042	Street and house number	M	an..35	Building name/number and street name
3164	LOCATION	M	an..35	
3229		N		Not used in the subset.
3251	POSTCODE	M	an..9	
3207	COUNTRY, CODED	M	an..3	The most important country codes according to ISO 3166 (postal codes must be indicated on the delivery note papers): <b>AT Austria</b> <b>BE Belgium</b> <b>BG Bulgaria</b> <b>CA Canada</b> <b>CH Switzerland</b> <b>DE Germany</b> <b>DK Denmark</b> <b>ES Spain</b> <b>FI Finland</b> <b>FR France</b> <b>GB United Kingdom</b> <b>GR Greece</b> <b>IE Ireland</b> <b>IT Italy</b> <b>LU Luxembourg</b> <b>NL Netherlands</b> <b>NO Norway</b> <b>PT Portugal</b> <b>SE Sweden</b> <b>TR Turkey</b> <b>US USA</b>

**Description:** In the NAD segment, details for identifying the involved partners as well as key address information are transmitted.

**Implementation note:** Here, the name of the partner and the address must be provided.

No = Consecutive segment number  
MaxOcc = Maximum occurrence of the segment/group  
Counter = Counter of segment/group within the standard

St = Status  
EDIFACT: M=Mandatory, C=Conditional  
User specific: R=Required, O=Optional, D=Dependent,  
A=Advised, N=Not used

DESADV

# Segment descriptions

---

**Example:** NAD+ST+4,01235E?+12::9++Max:Maximilian:Mustermann+Musterstr. 16+Musterstadt++12345+DE'

No = Consecutive segment number	St = Status
MaxOcc = Maximum occurrence of the segment/group	EDIFACT: M=Mandatory, C=Conditional
Counter = Counter of segment/group within the standard	User specific: R=Required, O=Optional, D=Dependent, A=Advised, N=Not used



# Segment descriptions

Number	No	Segment	St	MaxRep.	Level	Name
--------	----	---------	----	---------	-------	------

0130		<b>SG3</b>	C	1	2	<b>RFF</b>
------	--	------------	---	---	---	------------

This segment group includes the RFF segment. It contains the references for the partner specified in the NAD segment.

0140	12	<b>RFF</b>	M	1	2	<b>Reference Details</b>
------	----	------------	---	---	---	--------------------------

Tag	Name	St Format	Usage / Comments
RFF			
C506	REFERENCE DETAILS	M	
1153	Reference, Qualifier	M an..3	Code does not correspond to any UN/EDIFACT code list. Constant value: <b>API Additional partner identification* (e.g. own identification number with the partner)</b>
1154	Reference number	M an..35	

**Description:** This segment is used to specify references relating to the partner identified in the preceding NAD segment. This could be, for example, one's own identification number with the partner as a supplement to the GLN number.

**Example:** RFF+API:12345 '

No = Consecutive segment number  
MaxOcc = Maximum occurrence of the segment/group  
Counter = Counter of segment/group within the standard

St = Status  
EDIFACT: M=Mandatory, C=Conditional  
User specific: R=Required, O=Optional, D=Dependent,  
A=Advised, N=Not used

# Segment descriptions

Number	No	Segment	St	MaxRep.	Level	Name
--------	----	---------	----	---------	-------	------

0160		<b>SG4</b>	C	1	2	<b>CTA-COM</b>
------	--	------------	---	---	---	----------------

This segment group includes the CTA segment for specifying the contact person and the COM segment for indicating the communication connection.

0170	13	<b>CTA</b>	M	1	2	<b>Communication partner</b>
------	----	------------	---	---	---	------------------------------

Tag	Name	St	Format	Usage / Comments
CTA				
3139		N		Not used in the subset.
C056	DEPARTMENT OR STAFF DETAILS	M		
3413		N		Not used in the subset.
3412	Department or Processor	M	an..35	Name of the clerk or department.

**Description:** In the CTA segment, the name of a clerk responsible for the process can be transmitted for both the sender and the receiver.

**Example:** CTA++:Max Mustermann '

No = Consecutive segment number  
MaxOcc = Maximum occurrence of the segment/group  
Counter = Counter of segment/group within the standard

St = Status  
EDIFACT: M=Mandatory, C=Conditional  
User specific: R=Required, O=Optional, D=Dependent,  
A=Advised, N=Not used

# Segment descriptions

Number	No	Segment	St	MaxRep.	Level	Name
--------	----	---------	----	---------	-------	------

0160      **SG4**      C      1      2      **CTA-COM**

This segment group includes the CTA segment for specifying the contact person and the COM segment for indicating the communication connection.

0180    14      **COM**      C      3      3      **Communication link**

Tag	Name	St	Format	Usage / Comments
COM				
C076	COMMUNICATION CONNECTION	M		
3148	Communication number	M	an..512	
3155	Communication channel/service, qualifier	M	an..3	The following codes are available: <b>EM</b> E-mail <b>FX</b> Fax <b>TE</b> Telephone

**Description:** A segment for specifying the communication number and type for the contact or department indicated in the CTA segment.

**Example:** COM+max\_mustermann@e\_mail.de:EM'

No = Consecutive segment number  
MaxOcc = Maximum occurrence of the segment/group  
Counter = Counter of segment/group within the standard

St = Status  
EDIFACT: M=Mandatory, C=Conditional  
User specific: R=Required, O=Optional, D=Dependent,  
A=Advised, N=Not used

# Segment descriptions

Number	No	Segment	St	MaxRep.	Level	Name
--------	----	---------	----	---------	-------	------

0100		<b>SG2</b>	M	1	1	<b>Manufacturer / Supplier</b>
------	--	------------	---	---	---	--------------------------------

This segment group includes the NAD segment as well as segment groups 3 and 4, and is used to specify the partners involved in the message and their contacts.

0110	15	<b>NAD</b>	M	1	1	<b>Name and Address</b>
------	----	------------	---	---	---	-------------------------

Tag	Name	St	Format	Usage / Comments
NAD				
3035	PARTNER, QUALIFIER	M	an..3	The following codes are available: <b>SU Manufacturer / Supplier (Industry)</b>
C082	IDENTIFICATION OF THE PARTNER	M		
3039	Partner identification number, coded	M	an..35	Depending on the qualifier mentioned above, the partner's identification number is provided here.
1131		N		Not used in the subset.
3055	Managing organisation, coded	M	an..3	The following codes are available: <b>9 GLN (GS1 as the German issuer of GLN numbers)</b> <b>ZZZ bilaterally agreed (customer or supplier numbers)</b>
C058		N		
3124		N		Not used in the subset.
C080	PARTNER NAME	C		
3036	Partner Name 1	M	an..35	Partner Name 1
3036	Partner Name 2	C	an..35	Partner Name 2.
3036	Partner Name 3	C	an..35	Partner Name 3.
C059	STREET	C		
3042	Street and house number	M	an..35	Building name/number and street name
3164	LOCATION	C	an..35	
3229		N		Not used in the subset.
3251	POSTCODE	C	an..9	
3207	COUNTRY, CODED	C	an..3	The most important country codes according to ISO 3166 (postal codes must be indicated on the delivery note papers): <b>AT Austria</b> <b>BE Belgium</b> <b>BG Bulgaria</b> <b>CA Canada</b> <b>CH Switzerland</b> <b>DE Germany</b> <b>DK Denmark</b> <b>ES Spain</b> <b>FI Finland</b> <b>FR France</b> <b>GB United Kingdom</b> <b>GR Greece</b> <b>IE Ireland</b> <b>IT Italy</b> <b>LU Luxembourg</b> <b>NL Netherlands</b> <b>NO Norway</b> <b>PT Portugal</b> <b>SE Sweden</b> <b>TR Turkey</b> <b>US USA</b>

**Description:** In the NAD segment, details for identifying the involved partners as well as key address information are transmitted.

**Example:** NAD+SU+4,01235E?+12::9++Max:Maximilian:Mustermann+Musterstr. 16+Musterstadt++12345+DE'

No = Consecutive segment number  
MaxOcc = Maximum occurrence of the segment/group  
Counter = Counter of segment/group within the standard

St = Status  
EDIFACT: M=Mandatory, C=Conditional  
User specific: R=Required, O=Optional, D=Dependent,  
A=Advised, N=Not used

# Segment descriptions

Number	No	Segment	St	MaxRep.	Level	Name
0130		<b>SG3</b>	C	2	2	<b>RFF</b>
This segment group includes the RFF segment. It contains references to the partner specified in the NAD segment.						
0140	16	<b>RFF</b>	M	1	2	<b>Reference Details</b>

Tag	Name	St	Format	Usage / Comments
RFF				
C506	REFERENCE DETAILS	M		
1153	Reference, Qualifier	M	an..3	Code does not correspond to any UN/EDIFACT code list. Constant value: <b>API Additional partner identification* (e.g. own identification number with the partner)</b> <b>XA Company / site registration number (as required by law)</b>
1154	Reference umber	M	an..35	

**Description:**

This segment is used to specify references relating to the partner identified in the preceding NAD segment. This could be, for example, one's own identification number with the partner as a supplement to the GLN number. The code XA is available for transmitting the WEEE registration number (EAR/ Waste Electrical and Electronic Equipment Register). The transmission of the WEEE registration number has been mandatory since 24 November 2005.

**Example:**

RFF+XA:AN'

No = Consecutive segment number  
MaxOcc = Maximum occurrence of the segment/group  
Counter = Counter of segment/group within the standard

St = Status  
EDIFACT: M=Mandatory, C=Conditional  
User specific: R=Required, O=Optional, D=Dependent,  
A=Advised, N=Not used

# Segment descriptions

Number	No	Segment	St	MaxRep.	Level	Name
--------	----	---------	----	---------	-------	------

0160		<b>SG4</b>	C	1	2	<b>CTA-COM</b>
------	--	------------	---	---	---	----------------

This segment group contains the CTA segment for specifying the contact person and the COM segment for indicating the communication connection.

0170	17	<b>CTA</b>	M	1	2	<b>Communication partner</b>
------	----	------------	---	---	---	------------------------------

Tag	Name	St	Format	Usage / Comments
CTA				
3139		N		Not used in the subset.
C056	DEPARTMENT OR STAFF DETAILS	M		
3413		N		Not used in the subset.
3412	Department or Processor	M	an..35	Name of the clerk or department.

**Description:** In the CTA segment, the name of a contact person responsible for the process can be transmitted for both the sender and the receiver.

**Example:** CTA++:Max Mustermann '

No = Consecutive segment number  
MaxOcc = Maximum occurrence of the segment/group  
Counter = Counter of segment/group within the standard

St = Status  
EDIFACT: M=Mandatory, C=Conditional  
User specific: R=Required, O=Optional, D=Dependent,  
A=Advised, N=Not used

# Segment descriptions

Number	No	Segment	St	MaxRep.	Level	Name
--------	----	---------	----	---------	-------	------

0160      **SG4**      C      1      2      **CTA-COM**

This segment group contains the CTA segment for specifying the contact person and the COM segment for indicating the communication connection.

0180    18      **COM**      C      3      3      **Communication link**

Tag	Name	St	Format	Usage / Comments
COM				
C076	COMMUNICATION CONNECTION	M		
3148	Communication number	M	an..512	
3155	Communication channel/service, qualifier	M	an..3	The following codes are available: <b>EM E-Mail</b> <b>FX Fax</b> <b>TE Telephone</b>

**Description:** A segment for specifying the communication number and type for the contact or department indicated in the CTA segment.

**Example:** COM+max\_mustermann@e\_mail.de:EM'

No = Consecutive segment number  
MaxOcc = Maximum occurrence of the segment/group  
Counter = Counter of segment/group within the standard

St = Status  
EDIFACT: M=Mandatory, C=Conditional  
User specific: R=Required, O=Optional, D=Dependent,  
A=Advised, N=Not used

# Segment descriptions

Number	No	Segment	St	MaxRep.	Level	Name
--------	----	---------	----	---------	-------	------

0100      **SG2**      M      1      1      **Wholesaler**

This segment group includes the NAD segment as well as segment groups 3 and 4, and is used to specify the partners involved in the message and their contacts.

0110    19      **NAD**      M      1      1      **Name and Address**

Tag	Name	St	Format	Usage / Comments
NAD				
3035	PARTNER, QUALIFIER	M	an..3	The following codes are available: <b>WS Wholesaler</b>
C082	IDENTIFICATION OF THE PARTNER	M		
3039	Partner identification number, coded	M	an..35	Depending on the qualifier mentioned above, the partner's identification number is provided here.
1131		N		Not used in the subset.
3055	Managing organisation, coded	M	an..3	The following codes are available: <b>9 GLN (GS1 as the German issuer of GLN numbers)</b> <b>ZZZ bilaterally agreed (customer or supplier numbers)</b>
C058		N		
3124		N		Not used in the subset.
C080	PARTNER NAME	C		
3036	Partner Name 1	M	an..35	Partner Name 1
3036	Partner Name 2	C	an..35	Partner Name 2.
3036	Partner Name 3	C	an..35	Partner Name 3.
C059	STREET	C		
3042	Street and house number	M	an..35	Building name/number and street name
3164	LOCATION	C	an..35	
3229		N		Not used in the subset.
3251	POSTCODE	C	an..9	
3207	COUNTRY, CODED	C	an..3	The most important country codes according to ISO 3166 (postal codes must be indicated on the delivery note documents): <b>AT Austria</b> <b>BE Belgium</b> <b>BG Bulgaria</b> <b>CA Canada</b> <b>CH Switzerland</b> <b>DE Germany</b> <b>DK Denmark</b> <b>ES Spain</b> <b>FI Finland</b> <b>FR France</b> <b>GB United Kingdom</b> <b>GR Greece</b> <b>IE Ireland</b> <b>IT Italy</b> <b>LU Luxembourg</b> <b>NL Netherlands</b> <b>NO Norway</b> <b>PT Portugal</b> <b>SE Sweden</b> <b>TR Turkey</b> <b>US USA</b>

**Description:** In the NAD segment, details for the identification of the involved partners as well as key address information are transmitted.

**Example:** NAD+WS+4,01235E?+12::9++Max:Maximilian:Mustermann+Musterstr. 16+Musterstadt++12345+DE'

No = Consecutive segment number  
MaxOcc = Maximum occurrence of the segment/group  
Counter = Counter of segment/group within the standard

St = Status  
EDIFACT: M=Mandatory, C=Conditional  
User specific: R=Required, O=Optional, D=Dependent,  
A=Advised, N=Not used



# Segment descriptions

Number	No	Segment	St	MaxRep.	Level	Name
--------	----	---------	----	---------	-------	------

0130		<b>SG3</b>	C	1	2	<b>RFF</b>
------	--	------------	---	---	---	------------

This segment group includes the RFF segment. It contains the references for the partner specified in the NAD segment.

0140	20	<b>RFF</b>	M	1	2	<b>Reference Details</b>
------	----	------------	---	---	---	--------------------------

Tag	Name	St Format	Usage / Comments
RFF			
C506	REFERENCE DETAILS	M	
1153	Reference, Qualifier	M an..3	Code does not correspond to any UN/EDIFACT code list. Constant value: <b>API Additional partner identification* (e.g. own identification number with the partner)</b>
1154	Reference Number	M an..35	

**Description:** This segment is used to specify references relating to the partner identified in the preceding NAD segment. This could be, for example, one's own identification number with the partner as a supplement to the GLN number.

**Example:** RFF+API:12345 '

No = Consecutive segment number  
MaxOcc = Maximum occurrence of the segment/group  
Counter = Counter of segment/group within the standard

St = Status  
EDIFACT: M=Mandatory, C=Conditional  
User specific: R=Required, O=Optional, D=Dependent,  
A=Advised, N=Not used

# Segment descriptions

Number	No	Segment	St	MaxRep.	Level	Name
--------	----	---------	----	---------	-------	------

0160		<b>SG4</b>	C	1	2	<b>CTA-COM</b>
------	--	------------	---	---	---	----------------

This segment group contains the CTA segment for specifying the contact person and the COM segment for indicating the communication connection.

0170	21	<b>CTA</b>	M	1	2	<b>Trading Partner</b>
------	----	------------	---	---	---	------------------------

Tag	Name	St	Format	Usage / Comments
CTA				
3139		N		Not used in the subset.
C056	DEPARTMENT OR PROCESSOR	M		
3413		N		Not used in the subset.
3412	Department or Processor	M	an..35	Name of the clerk or department.

**Description:** In the CTA segment, the name of a contact person responsible for the process can be transmitted for both the sender and the receiver.

**Example:** CTA++:Max Mustermann '

No = Consecutive segment number  
MaxOcc = Maximum occurrence of the segment/group  
Counter = Counter of segment/group within the standard

St = Status  
EDIFACT: M=Mandatory, C=Conditional  
User specific: R=Required, O=Optional, D=Dependent,  
A=Advised, N=Not used

# Segment descriptions

Number	No	Segment	St	MaxRep.	Level	Name
--------	----	---------	----	---------	-------	------

0160      **SG4**      C      1      2      **CTA-COM**

This segment group contains the CTA segment for specifying the contact person and the COM segment for indicating the communication connection.

0180    22      **COM**      C      3      3      **Communication link**

Tag	Name	St	Format	Usage / Comments
COM				
C076	COMMUNICATION CONNECTION	M		
3148	Communication number	M	an..512	
3155	Communication channel/service, qualifier	M	an..3	The following codes are available: <b>EM E-Mail</b> <b>FX Fax</b> <b>TE Telephone</b>

**Description:** A segment for specifying the communication number and type for the contact or department indicated in the CTA segment.

**Example:** COM+max\_mustermann@e\_mail.de:EM'

No = Consecutive segment number  
MaxOcc = Maximum occurrence of the segment/group  
Counter = Counter of segment/group within the standard

St = Status  
EDIFACT: M=Mandatory, C=Conditional  
User specific: R=Required, O=Optional, D=Dependent,  
A=Advised, N=Not used

# Segment descriptions

Number	No	Segment	St	MaxRep.	Level	Name
--------	----	---------	----	---------	-------	------

0100      **SG2**      C      1      1      **Goods recipient**

This segment group includes the NAD segment as well as segment groups 3 and 4, and is used to specify the partners involved in the message and their contacts.

0110    23      **NAD**      M      1      1      **Name and Address**

Tag	Name	St	Format	Usage / Comments
NAD				
3035	PARTNER, QUALIFIER	M	an..3	The following codes are available: <b>DP Goods recipient wholesale</b>
C082	PARTNER IDENTIFICATION	M		
3039	Partner identification number, coded	M	an..35	Depending on the qualifier mentioned above, the partner's identification number is provided here.
1131		N		Not used in the subset.
3055	Managing organisation, coded	M	an..3	The following codes are available: <b>9 GLN (GS1 as the German issuer of GLN numbers)</b> <b>ZZZ bilaterally agreed (customer or supplier numbers)</b>
C058		N		
3124		N		Not used in the subset.
C080	PARTNER NAME	M		
3036	Partner Name 1	M	an..35	Partner Name 1.
3036	Partner Name 2	C	an..35	Partner Name 2.
3036	Partner Name 3	C	an..35	Partner Name 3.
C059	STREET	M		
3042	Street and house number	M	an..35	Building name/number and street name
3164	LOCATION	M	an..35	
3229		N		Not used in the subset.
3251	POSTCODE	M	an..9	
3207	COUNTRY, CODED	M	an..3	The most important country codes according to ISO 3166 (postal codes must be indicated on the delivery note papers): <b>AT Austria</b> <b>BE Belgium</b> <b>BG Bulgaria</b> <b>CA Canada</b> <b>CH Switzerland</b> <b>DE Germany</b> <b>DK Denmark</b> <b>ES Spain</b> <b>FI Finland</b> <b>FR France</b> <b>GB United Kingdom</b> <b>GR Greece</b> <b>IE Ireland</b> <b>IT Italy</b> <b>LU Luxembourg</b> <b>NL Netherlands</b> <b>NO Norway</b> <b>PT Portugal</b> <b>SE Sweden</b> <b>TR Turkey</b> <b>US USA</b>

**Description:** In the NAD segment, details for the identification of the involved partners as well as key address information are transmitted.

**Example:** NAD+DP+4,01235E?+12::9++Max:Maximilian:Mustermann+Musterstr. 16+Musterstadt++12345+DE'

No = Consecutive segment number  
MaxOcc = Maximum occurrence of the segment/group  
Counter = Counter of segment/group within the standard

St = Status  
EDIFACT: M=Mandatory, C=Conditional  
User specific: R=Required, O=Optional, D=Dependent,  
A=Advised, N=Not used

# Segment descriptions

Number	No	Segment	St	MaxRep.	Level	Name
--------	----	---------	----	---------	-------	------

0130		<b>SG3</b>	C	1	2	<b>RFF</b>
------	--	------------	---	---	---	------------

This segment group includes the RFF segment. It contains references to the partner specified in the NAD segment.

0140	24	<b>RFF</b>	M	1	2	<b>Reference Details</b>
------	----	------------	---	---	---	--------------------------

Tag	Name	St	Format	Usage / Comments
RFF				
C506	REFERENCE DETAILS	M		
1153	Reference, Qualifier	M	an..3	Code does not correspond to any UN/EDIFACT code list. Constant value: <b>API Additional partner identification* (e.g. own identification number with the partner)</b>
1154	Reference Number	M	an..35	

**Description:** This segment is used to specify references relating to the partner identified in the preceding NAD segment. This could be, for example, one's own identification number with the partner as a supplement to the GLN number.

**Example:** RFF+API:12345 '

No = Consecutive segment number  
MaxOcc = Maximum occurrence of the segment/group  
Counter = Counter of segment/group within the standard

St = Status  
EDIFACT: M=Mandatory, C=Conditional  
User specific: R=Required, O=Optional, D=Dependent,  
A=Advised, N=Not used

# Segment descriptions

Number	No	Segment	St	MaxRep.	Level	Name
--------	----	---------	----	---------	-------	------

0160		<b>SG4</b>	C	1	2	<b>CTA-COM</b>
------	--	------------	---	---	---	----------------

This segment group includes the CTA segment for specifying the contact person and the COM segment for indicating the communication connection.

0170	25	<b>CTA</b>	M	1	2	<b>Communication Partner</b>
------	----	------------	---	---	---	------------------------------

Tag	Name	St	Format	Usage / Comments
CTA				
3139		N		Not used in the subset.
C056	DEPARTMENT OR STAFF DETAILS	M		
3413		N		Not used in the subset.
3412	Department or Processor	M	an..35	Name of the clerk or department.

**Description:** In the CTA segment, the name of a clerk responsible for the process can be transmitted for both the sender and the receiver.

**Example:** CTA++:Max Mustermann '

No = Consecutive segment number  
 MaxOcc = Maximum occurrence of the segment/group  
 Counter = Counter of segment/group within the standard

St = Status  
 EDIFACT: M=Mandatory, C=Conditional  
 User specific: R=Required, O=Optional, D=Dependent,  
 A=Advised, N=Not used

# Segment descriptions

Number	No	Segment	St	MaxRep.	Level	Name
--------	----	---------	----	---------	-------	------

0160      **SG4**      C      1      2      **CTA-COM**

This segment group includes the CTA segment for specifying the contact person and the COM segment for indicating the communication connection.

0180    26      **COM**      C      3      3      **Communication link**

Tag	Name	St	Format	Usage / Comments
COM				
C076	COMMUNICATION CONNECTION	M		
3148	Communication number	M	an..512	
3155	Communication channel/service, qualifier	M	an..3	The following codes are available: <b>EM E-Mail</b> <b>FX Fax</b> <b>TE Telephone</b>

**Description:** A segment for specifying the communication number and type for the contact or department indicated in the CTA segment.

**Example:** COM+max\_mustermann@e\_mail.de:EM'

No = Consecutive segment number  
MaxOcc = Maximum occurrence of the segment/group  
Counter = Counter of segment/group within the standard

St = Status  
EDIFACT: M=Mandatory, C=Conditional  
User specific: R=Required, O=Optional, D=Dependent,  
A=Advised, N=Not used

# Segment descriptions

Number	No	Segment	St	MaxRep.	Level	Name
0230		<b>SG6</b>	M	1	1	<b>TDT</b>
This segment group contains the TDT segment for specifying transport details.						
0240	27	<b>TDT</b>	M	1	1	<b>Transport data</b>

Tag	Name	St	Format	Usage / Comments
TDT				
8051	TRANSPORT DETAILS, QUALIFIER	M	an..3	Constant value: <b>13 Transport</b>
8028	Consignment Number	C	an..17	Unique number of the consignment
C220	TYPE OF TRANSPORT	M		
8067	Mode of transport, coded	M	an..3	The following codes are available: <b>30 Road transport</b>
C228	TRANSPORT MEANS	M		
8179	Type of transport means, identification	M	an..8	The codes marked with * do not correspond to any UN/EDIFACT code list. The following codes are available: <b>31 Lorry</b> <b>51 Parcel service *</b>

**Description:**

In the TDT segment, the mode of transport and the means of transport must be conveyed.

**Implementation note:**

For clear traceability of an order, a consignment number is desirable. / In the case of multiple delivery notifications (see note BGM segment), the consignment number must be transmitted for each goods recipient and delivery time. This allows the wholesale trade to consolidate multiple delivery notifications into one shipment!

**Example:**

TDT+13+AN37+30+31 '

No = Consecutive segment number  
MaxOcc = Maximum occurrence of the segment/group  
Counter = Counter of segment/group within the standard

St = Status  
EDIFACT: M=Mandatory, C=Conditional  
User specific: R=Required, O=Optional, D=Dependent,  
A=Advised, N=Not used



# Segment descriptions

Number	No	Segment	St	MaxRep.	Level	Name
--------	----	---------	----	---------	-------	------

0370      **SG10**      M      9999      1      **CPS-SG11-SG15**

This segment group contains the CPS segment as well as segment groups 11, 13, 14, 15, 16, and 23. It includes information about all packaging levels and the individual items of the shipment. This segment group can represent the packaging hierarchy. The group describes the packaging structure from the outer to the inner packaging level. Information about the inner packaging level is followed by detailed product details.

0380      28      **CPS**      M      1      1      **Packaging hierarchy of the consignment**

Tag	Name	St Format	Usage / Comments
CPS			
7164	Hierarchical Identification Number	M n..12	A unique number assigned by the sender to identify a level within a hierarchical structure. At least one hierarchy level must always be specified. If no hierarchy is necessary, one level is used for the entire shipment (sequential number of the packaging hierarchy). A unique integer number other than 0 must be provided.
7166	HIERARCHICAL MASTER IDENTIFICATION	C n..12	Identification number of the next higher level in a hierarchical structure. A unique integer number other than 0 must be provided.

**Description:** This segment is used to specify the sequence of packages in a consignment.

**Example:** CPS+2+1'

No = Consecutive segment number  
MaxOcc = Maximum occurrence of the segment/group  
Counter = Counter of segment/group within the standard

St = Status  
EDIFACT: M=Mandatory, C=Conditional  
User specific: R=Required, O=Optional, D=Dependent,  
A=Advised, N=Not used

# Segment descriptions

Number	No	Segment	St	MaxRep.	Level	Name
--------	----	---------	----	---------	-------	------

0400      **SG11**      C      9999      2      **PAC-MEA-SG13**

This segment group includes the PAC and MEA segments as well as segment groups 13 and 14. It specifies the type of packaging, its physical dimensions, markings and package numbers, quantities, date/time details, and information about the packaging at this level.

0410    29      **PAC**      M      1      2      **Parcel/Packaging**

Tag	Name	St	Format	Usage / Comments
PAC				
7224	NUMBER OF PACKAGES	M	n..8	Number of packages in this hierarchy level.
C531	Packaging details	C		
7075	Packaging level, coded	M	an..3	
C202	TYPE OF PACKAGING	M		
7065	Type of packaging, identification	M	an..17	The following codes are available: <b>BB</b> Role <b>BG</b> Sack <b>BH</b> Bundle/Bundles <b>BK</b> Basket <b>CF</b> Crate <b>CG</b> Cage <b>CH</b> Gitterbox <b>CT</b> Carton <b>Lorry</b> Lorry <b>PA</b> Parcel <b>PC</b> Parcel <b>PG</b> Single-use pallet <b>PN</b> Euro pallet <b>PU</b> Box <b>SC</b> Mixed pallet <b>TU</b> Pipe
C402		N		
7077		N		Not used in the subset.
C532	RETURNABLE PACKAGING	C		
8395		N		Not used in the subset.
8393	Contents of returnable packaging, coded	C	an..3	Constant value: <b>3</b> for empty packaging as an indication that the packaging must be returned.

**Description:** This segment can be used to specify the total number of packages in a consignment as defined in the CPS segment. The contents of each package are then described in the subsequent LIN segments. Additionally, the type of packaging can be specified at the hierarchical level.

**Example:** PAC+9++PC++:3'

No = Consecutive segment number  
MaxOcc = Maximum occurrence of the segment/group  
Counter = Counter of segment/group within the standard

St = Status  
EDIFACT: M=Mandatory, C=Conditional  
User specific: R=Required, O=Optional, D=Dependent,  
A=Advised, N=Not used

# Segment descriptions

Number	No	Segment	St	MaxRep.	Level	Name
0400		<b>SG11</b>	C	9999	2	<b>PAC-MEA-SG13</b>
This segment group includes the PAC and MEA segments as well as segment groups 13 and 14. It specifies the type of packaging, its physical dimensions, markings and package numbers, quantities, date/time details, and information about the packaging at this level.						
0420	30	<b>MEA</b>	C	5	3	<b>Dimensions and Weights</b>

Tag	Name	St	Format	Usage / Comments
MEA				
6311	DIMENSIONS, APPLICATION QUALIFIER	M	an..3	Constant value: <b>AAE for dimensions</b>
C502	DIMENSIONS	M		
6313	Measurements, dimensioned, coded	M	an..3	The following codes are available: <b>AAI Fill quantity</b> <b>ABJ Volume</b> <b>BW Weight</b> <b>DI Diameter</b> <b>DP Depth</b> <b>DW Width left</b> <b>FN Area</b> <b>HT Height</b> <b>LN Length</b> <b>VW Width right</b> <b>WD Width</b>
C174	DIMENSIONS AND DEVIATIONS	M		
6411	Unit of measure, qualifier	M	an..3	The following codes are available: <b>CMK Square Centimetre</b> <b>CMQ Cubic centimetre</b> <b>CMT Centimetre</b> <b>DZN Dozen</b> <b>GRM Grams</b> <b>HLT Hecto-Litre</b> <b>HUR Hour</b> <b>KGM Kilogram</b> <b>KTM Kilometre</b> <b>LTR Liter</b> <b>MIN Minute</b> <b>MMT Millimetre</b> <b>MTK Square Metre</b> <b>MTQ Cubic Metre</b> <b>MTR Meter</b> <b>PAK Package</b> <b>PCE Piece</b> <b>PR Pair</b> <b>RO Number of rolls</b> <b>SET Record</b> <b>TNE Tonne</b> <b>UI Work Units</b>
6314	Measurement value	M	an..18	Measurement value with a maximum of three decimal places.

**Description:** In the MEA segment, logistical details about the packaging can be transmitted.

**Example:** MEA+AAE+AAI+CMK:50'

No = Consecutive segment number  
MaxOcc = Maximum occurrence of the segment/group  
Counter = Counter of segment/group within the standard

St = Status  
EDIFACT: M=Mandatory, C=Conditional  
User specific: R=Required, O=Optional, D=Dependent,  
A=Advised, N=Not used

# Segment descriptions

Number	No	Segment	St	MaxRep.	Level	Name
--------	----	---------	----	---------	-------	------

0470      **SG13**      C      2      3      **PCI-SG14**

This segment group includes the PCI segment as well as Segment Group 14. The group provides information on markings, label contents, and package numbers.

0480    31      **PCI**      M      1      3      **Package Identification**

Tag	Name	St Format	Usage / Comments
PCI			
4233	MARKING INSTRUCTIONS, CODED	C an..3	The codes marked with * do not correspond to any UN/EDIFACT code list. The following codes are available: <b>12 Supplier's package number (individual)*</b> <b>33E NVE with leading data identifier, number of the scan - Barcode*</b>

**Description:** The PCI segment contains information on markings and labels for the packaging unit and level specified in the PAC segment.

**Example:** PCI+33E'

No = Consecutive segment number  
MaxOcc = Maximum occurrence of the segment/group  
Counter = Counter of segment/group within the standard

St = Status  
EDIFACT: M=Mandatory, C=Conditional  
User specific: R=Required, O=Optional, D=Dependent,  
A=Advised, N=Not used

# Segment descriptions

Number	No	Segment	St	MaxRep.	Level	Name
--------	----	---------	----	---------	-------	------

0520      **SG14**      C      1      4      **GIN**

This segment group includes the GIN segment, which specifies packaging identification numbers (e.g., the consignment unit number).

0530      32      **GIN**      M      1      4      **Product Identification Number**

Tag	Name	St Format	Usage / Comments
GIN			
7405	Identification number, qualifier	M an..3	The following codes are available: <b>BJ NVE with leading data identifier (the first two digits), number of the scan - Barcode</b> <b>ML Supplier's package number (individual)</b>
C208	IDENTIFICATION NUMBER	M	
7402	Identification number	M an..35	

**Description:** This segment contains identification numbers associated with the packaging unit and level specified in the PAC segment.

**Example:** GIN+BJ+11111 '

No = Consecutive segment number  
MaxOcc = Maximum occurrence of the segment/group  
Counter = Counter of segment/group within the standard

St = Status  
EDIFACT: M=Mandatory, C=Conditional  
User specific: R=Required, O=Optional, D=Dependent,  
A=Advised, N=Not used

# Segment descriptions

Number	No	Segment	St	MaxRep.	Level	Name
--------	----	---------	----	---------	-------	------

0550      **SG15**      C      9999      2      **LIN-PIA-IMD-QTY-SG16-SG23**

This segment group includes the LIN, PIA, QTY, and DTM segments, as well as segment groups 16 and 23. It provides details on the items (positions) shipped.

0560    33      **LIN**      M      1      2      **Position Data**

Tag	Name	St	Format	Usage / Comments
LIN				
1082	ITEM NUMBER	M	n..6	The items in the delivery notification are numbered consecutively throughout the entire message.
1229		N		Not used in the subset.
C212	PRODUCT IDENTIFICATION	M		
7140	Product/Service Number	M	an..35	Supplier's item number.
7143	Product/Service Number Type, Coded	M	an..3	The item number transmitted in the order (GTIN or manufacturer's item number) is transferred. The following codes are available: <b>EN GTIN</b> <b>MF Factory item number</b>

**Description:** This segment identifies a delivered item.

**Example:** LIN+9+++4,01235E?+12:EN'

No = Consecutive segment number  
MaxOcc = Maximum occurrence of the segment/group  
Counter = Counter of segment/group within the standard

St = Status  
EDIFACT: M=Mandatory, C=Conditional  
User specific: R=Required, O=Optional, D=Dependent,  
A=Advised, N=Not used

# Segment descriptions

Number	No	Segment	St	MaxRep.	Level	Name
--------	----	---------	----	---------	-------	------

0550      **SG15**      C      9999      2      **LIN-PIA-IMD-QTY-SG16-SG23**

This segment group includes the LIN, PIA, QTY, and DTM segments, as well as segment groups 16 and 23. It provides details on the items (positions) shipped.

0570      34      **PIA**      C      10      3      **Additional product identification**

Tag	Name	St	Format	Usage / Comments
PIA				
4347	Product Identification Function, Coded	M	an..3	Constant value: <b>1 Additional identification</b>
C212	PRODUCT IDENTIFICATION	M		
7140	Product/Service Number	M	an..35	Number associated with the product.
7143	Item/Service Number, Coded	M	an..3	The codes marked with * do not correspond to any UN/EDIFACT code list. The following codes are available: <b>NB Batch number</b> <b>SN Serial number</b> <b>SNe first serial number (sequence of serial numbers)*</b> <b>SNI last serial number (sequence of serial numbers)*</b>
C212	PRODUCT IDENTIFICATION	C		
7140	Product/Service Number	M	an..35	Number associated with the product.
7143	Item/Service Number, Coded	M	an..3	The codes marked with * do not correspond to any UN/EDIFACT code list. The following codes are available: <b>NB Batch number</b> <b>SN Serial number</b> <b>SNe first serial number (sequence of serial numbers)*</b> <b>SNI last serial number (sequence of serial numbers)*</b>
C212	PRODUCT IDENTIFICATION	C		
7140	Product/Service Number	M	an..35	Number associated with the product.
7143	Product/Service Number, Coded	M	an..3	The codes marked with * do not correspond to any UN/EDIFACT code list. The following codes are available: <b>NB Batch number</b> <b>SN Serial number</b> <b>SNe first serial number (sequence of serial numbers)*</b> <b>SNI last serial number (sequence of serial numbers)*</b>
C212	PRODUCT IDENTIFICATION	C		
7140	Product/Service Number	M	an..35	Number associated with the product.
7143	Item/Service Number, Coded	M	an..3	The codes marked with * do not correspond to any UN/EDIFACT code list. The following codes are available: <b>NB Batch number</b> <b>SN Serial number</b> <b>SNe first serial number (sequence of serial numbers)*</b> <b>SNI last serial number (sequence of serial numbers)*</b>
C212	PRODUCT IDENTIFICATION	C		
7140	Product/Service Number	M	an..35	Number associated with the product.
7143	Item/Service Number, Coded	M	an..3	The codes marked with * do not correspond to any UN/EDIFACT code list. The following codes are available:

No = Consecutive segment number  
MaxOcc = Maximum occurrence of the segment/group  
Counter = Counter of segment/group within the standard

St = Status  
EDIFACT: M=Mandatory, C=Conditional  
User specific: R=Required, O=Optional, D=Dependent,  
A=Advised, N=Not used

# Segment descriptions

Tag	Name	St Format	Usage / Comments
			<b>NB</b> Batch number <b>SN</b> Serial number <b>SNe</b> first serial number (sequence of serial numbers)* <b>SNI</b> last serial number (sequence of serial numbers)*

**Description:** This segment is used to provide additional product identifications for the current item.

**Example:** PIA+1+12345:NB+12345:NB+12345:NB+12345:NB '

No = Consecutive segment number  
MaxOcc = Maximum occurrence of the segment/group  
Counter = Counter of segment/group within the standard

St = Status  
EDIFACT: M=Mandatory, C=Conditional  
User specific: R=Required, O=Optional, D=Dependent,  
A=Advised, N=Not used



# Segment descriptions

Number	No	Segment	St	MaxRep.	Level	Name
--------	----	---------	----	---------	-------	------

0550		<b>SG15</b>	C	9999	2	<b>LIN-PIA-IMD-QTY-SG16-SG23</b>
------	--	-------------	---	------	---	----------------------------------

This segment group includes the LIN, PIA, QTY, and DTM segments, as well as segment groups 16 and 23. It provides details on the items (positions) shipped.

0580	35	<b>IMD</b>	C	2	3	<b>Specification of the item</b>
------	----	------------	---	---	---	----------------------------------

Tag	Name	St	Format	Usage / Comments
IMD				
7077		N		Not used in the subset.
7081		N		Not used in the subset.
C273	DESCRIPTION OF THE ITEM	M		
7009	Description of the item	M	an..17	The following codes are available: <b>SP Specification of the item</b>
1131		N		Not used in the subset.
3055		N		Not used in the subset.
7008	Description of the item	M	an..35	Positions 1-35.
7008	Description of the item	C	an..5	Positions 36-40.

**Description:**

The segment is used when the item number does not uniquely specify the item. To specify the item, 2\*40 character item descriptions are available by repeating the IMD segment twice.

**Example:**

IMD+++SP::Musterartikel Musterartikel Mustera:rtike'

No = Consecutive segment number  
 MaxOcc = Maximum occurrence of the segment/group  
 Counter = Counter of segment/group within the standard

St = Status  
 EDIFACT: M=Mandatory, C=Conditional  
 User specific: R=Required, O=Optional, D=Dependent,  
 A=Advised, N=Not used

# Segment descriptions

Number	No	Segment	St	MaxRep.	Level	Name
--------	----	---------	----	---------	-------	------

0550		<b>SG15</b>	C	9999	2	<b>LIN-PIA-IMD-QTY-SG16-SG23</b>
------	--	-------------	---	------	---	----------------------------------

This segment group includes the LIN, PIA, QTY, and DTM segments, as well as segment groups 16 and 23. It provides details on the items (positions) shipped.

0580	36	<b>IMD</b>	C	8	3	<b>Additional text for the item</b>
------	----	------------	---	---	---	-------------------------------------

Tag	Name	St	Format	Usage / Comments
IMD				
7077		N		Not used in the subset.
7081		N		Not used in the subset.
C273	DESCRIPTION OF THE ITEM	M		
7009	Description of the item	M	an..17	The following codes are available: <b>TO for additional text to the item</b>
1131		N		Not used in the subset.
3055		N		Not used in the subset.
7008	Description of the item	M	an..35	Positions 1-35.
7008	Description of the item	C	an..5	Positions 36-40.

**Description:**

The segment is used when, in addition to the item number and possibly item text, a verbal description of the item is necessary. In this case, there are eight repetitions of the IMD segment, each with 40 characters of text (thus a total of 320 characters of text) available. If possible, this segment should not be used, as it would otherwise require manual processing of the message.

**Example:**

IMD+++ZU::Musterartikel Musterartikel Mustera:rtike'

No = Consecutive segment number  
 MaxOcc = Maximum occurrence of the segment/group  
 Counter = Counter of segment/group within the standard

St = Status  
 EDIFACT: M=Mandatory, C=Conditional  
 User specific: R=Required, O=Optional, D=Dependent,  
 A=Advised, N=Not used

# Segment descriptions

Number	No	Segment	St	MaxRep.	Level	Name
--------	----	---------	----	---------	-------	------

0550      **SG15**      C      9999      2      **LIN-PIA-IMD-QTY-SG16-SG23**

This segment group includes the LIN, PIA, QTY, and DTM segments, as well as segment groups 16 and 23. It provides details on the items (positions) shipped.

0600      37      **QTY**      M      1      3      **Quantity**

Tag	Name	St Format	Usage / Comments
QTY			
C186	QUANTITY DETAILS	M	
6063	Quantity, Qualifier	M an..3	Constant value: <b>12 Quantity</b>
6060	Quantity	M n..15	Quantity with up to three decimal places. The specification of the quantity 0 is not meaningful.
6411	Unit of measure, qualifier	M an..3	The following codes are available: <b>CMK Square centimetre</b> <b>CMQ Cubic Centimetre</b> <b>CMT Centimetre</b> <b>DZN Dozen</b> <b>GRM Grams</b> <b>HLT Hecto-Litre</b> <b>HUR Hour</b> <b>KGM Kilogram</b> <b>KTM Kilometre</b> <b>LTR Litre</b> <b>MIN Minute</b> <b>MMT Millimetre</b> <b>MTK Square Metre</b> <b>MTQ Cubic Metre</b> <b>MTR Meter</b> <b>PAK Package</b> <b>PCE Piece</b> <b>PR Pair</b> <b>RO Number of rolls</b> <b>SET Record</b> <b>TNE Tonne</b> <b>UI Work Units</b>

**Description:** In the QTY segment, the quantity to be delivered and the unit of measure are transmitted.

**Implementation note:** The quantity units should be consistent across the systems of industry and wholesale. To achieve this, a prior master data reconciliation is recommended.

**Example:** QTY+12:9:CMK '

No = Consecutive segment number  
MaxOcc = Maximum occurrence of the segment/group  
Counter = Counter of segment/group within the standard

St = Status  
EDIFACT: M=Mandatory, C=Conditional  
User specific: R=Required, O=Optional, D=Dependent,  
A=Advised, N=Not used

# Segment descriptions

Number	No	Segment	St	MaxRep.	Level	Name
--------	----	---------	----	---------	-------	------

0710		<b>SG16</b>	M	99	3	<b>Reference to the order</b>
------	--	-------------	---	----	---	-------------------------------

This segment group includes the reference to the order.

0720	38	<b>RFF</b>	M	1	3	<b>Reference Details</b>
------	----	------------	---	---	---	--------------------------

Tag	Name	St	Format	Usage / Comments
RFF				
C506	REFERENCE	M		
1153	Reference, Qualifier	M	an..3	The following codes are available: <b>ON Wholesaler's order number</b>
1154	Reference number	M	an..35	
1156	Item Number	C	an..6	Number of the item in the referenced document

**Description:** This segment is used to specify all references that relate solely to the item.

**Example:** RFF+ON:1:1 '

No = Consecutive segment number  
MaxOcc = Maximum occurrence of the segment/group  
Counter = Counter of segment/group within the standard

St = Status  
EDIFACT: M=Mandatory, C=Conditional  
User specific: R=Required, O=Optional, D=Dependent,  
A=Advised, N=Not used

# Segment descriptions

Number	No	Segment	St	MaxRep.	Level	Name
--------	----	---------	----	---------	-------	------

0710		<b>SG16</b>	M	99	3	<b>Reference to the order</b>
------	--	-------------	---	----	---	-------------------------------

This segment group includes the reference to the order.

0750	39	<b>DTM</b>	C	1	4	<b>Date/Time/Period Details</b>
------	----	------------	---	---	---	---------------------------------

Tag	Name	St	Format	Usage / Comments
DTM				
C507	DATE/TIME/PERIOD DETAILS	M		
2005	Date/Time/Period Details, Qualifiers	M	an..3	The following codes are available: <b>171 Reference date</b>
2380	Date/Time/Period Details	M	an..35	Date, formatted as shown in data element 2379.
2379	Date/Time/Period Details, Format, Qualifier	M	an..3	Constant value: <b>102 YYYYMMDD</b>

**Example:** DTM+171:20150323:102'

No = Consecutive segment number  
MaxOcc = Maximum occurrence of the segment/group  
Counter = Counter of segment/group within the standard

St = Status  
EDIFACT: M=Mandatory, C=Conditional  
User specific: R=Required, O=Optional, D=Dependent,  
A=Advised, N=Not used

# Segment descriptions

Number	No	Segment	St	MaxRep.	Level	Name
--------	----	---------	----	---------	-------	------

0710		<b>SG16</b>	C	2	3	<b>RFF-DTM</b>
------	--	-------------	---	---	---	----------------

This segment group includes the RFF segment. The group contains references to individual items.

0720	40	<b>RFF</b>	M	1	3	<b>Reference Details</b>
------	----	------------	---	---	---	--------------------------

Tag	Name	St	Format	Usage / Comments
RFF				
C506	REFERENCE	M		
1153	Reference, Qualifier	M	an..3	The following codes are available: <b>AAJ Delivery note number</b> <b>AAY Forwarder's advice of dispatch number</b>
1154	Reference number	M	an..35	
1156	Item Number	C	an..6	Number of the item in the referenced document

**Description:** This segment is used to specify all references that relate solely to the item.

**Implementation note:** The code AAJ is required for traceability in case of discrepancies between the delivery notification and goods receipt.

**Example:** RFF+AAJ:1:1'

No = Consecutive segment number  
MaxOcc = Maximum occurrence of the segment/group  
Counter = Counter of segment/group within the standard

St = Status  
EDIFACT: M=Mandatory, C=Conditional  
User specific: R=Required, O=Optional, D=Dependent,  
A=Advised, N=Not used

# Segment descriptions

Number	No	Segment	St	MaxRep.	Level	Name
--------	----	---------	----	---------	-------	------

0710		<b>SG16</b>	C	2	3	<b>RFF-DTM</b>
------	--	-------------	---	---	---	----------------

This segment group includes the RFF segment. The group contains references to individual items.

0750	41	<b>DTM</b>	C	1	4	<b>Date/Time/Period Details</b>
------	----	------------	---	---	---	---------------------------------

Tag	Name	St	Format	Usage / Comments
DTM				
C507	DATE/TIME/PERIOD DETAILS	M		
2005	Date/Time/Period Details, Qualifiers	M	an..3	The following codes are available: <b>171 Reference date</b>
2380	Date/Time/Period Details	M	an..35	Date, formatted as shown in Data Element 2379.
2379	Date/Time/Period Details, Format, Qualifier	M	an..3	Constant value: <b>102 YYYYMMDD</b>

**Example:** DTM+171:20150323:102'

No = Consecutive segment number  
MaxOcc = Maximum occurrence of the segment/group  
Counter = Counter of segment/group within the standard

St = Status  
EDIFACT: M=Mandatory, C=Conditional  
User specific: R=Required, O=Optional, D=Dependent,  
A=Advised, N=Not used

# Segment descriptions

Number	No	Segment	St	MaxRep.	Level	Name
--------	----	---------	----	---------	-------	------

1000      **SG23**      C      1      3      **Partial delivery with subsequent delivery**

This segment group contains the QVR and DTM segments for specifying quantity variances and the corresponding dates.

1010      42      **QVR**      M      1      3      **Quantity discrepancies**

Tag	Name	St Format	Usage / Comments
QVR			
C279	QUANTITY DISCREPANCY INFORMATION	C	
6064	Quantity discrepancy	M n..15	Quantity with up to three decimal places.
6063	Quantity, Qualifier	M an..3	Constant value: <b>12 Quantity</b>
4221	Reason for delivery quantity deviation, coded	M an..3	The following codes are available: <b>BP Partial delivery, follow-up delivery to come</b>

**Description:** At this point, partial deliveries and excess deliveries are specified.

**Note:** In this segment, the difference between the delivered quantity and the ordered quantity is specified.

**Example:** QVR+9:12+BP'

No = Consecutive segment number  
MaxOcc = Maximum occurrence of the segment/group  
Counter = Counter of segment/group within the standard

St = Status  
EDIFACT: M=Mandatory, C=Conditional  
User specific: R=Required, O=Optional, D=Dependent,  
A=Advised, N=Not used



# Segment descriptions

Number	No	Segment	St	MaxRep.	Level	Name
--------	----	---------	----	---------	-------	------

1000      **SG23**      C      1      3      **Partial delivery with subsequent delivery**

This segment group contains the QVR and DTM segments for specifying quantity variances and the corresponding dates.

1020      43      **DTM**      C      1      4      **Date/Time/Period Details**

Tag	Name	St	Format	Usage / Comments
DTM				
C507	DATE/TIME/PERIOD DETAILS	M		
2005	Date/Time/Period Details, Qualifier	M	an..3	Code does not correspond to any UN/EDIFACT code list. Constant value: <b>58E Date/time of next resupply*</b>
2380	Date/Time/Period Details	M	an..35	Date, formatted as shown in data element 2379.
2379	Date/Time/Period Details, Format, Qualifier	M	an..3	The following codes are available: <b>102 Format: YYYYMMDD</b> <b>616 Format: YYYYWW</b>

**Description:** This segment is used for date information related to quantity discrepancies identified in the preceding QVR segment.

**Example:** DTM+58E:20141014:102 '

No = Consecutive segment number  
MaxOcc = Maximum occurrence of the segment/group  
Counter = Counter of segment/group within the standard

St = Status  
EDIFACT: M=Mandatory, C=Conditional  
User specific: R=Required, O=Optional, D=Dependent,  
A=Advised, N=Not used

# Segment descriptions

Number	No	Segment	St	MaxRep.	Level	Name
--------	----	---------	----	---------	-------	------

1000      **SG23**      C      1      3      **Over-delivery / Partial delivery without follow-up delivery**

This segment group contains the QVR and DTM segments for indicating quantity variances and the corresponding dates.

1010      44      **QVR**      M      1      3      **Quantity discrepancies**

Tag	Name	St	Format	Usage / Comments
QVR				
C279	QUANTITY DISCREPANCY INFORMATION	C		
6064	Quantity discrepancy	M	n..15	Quantity with up to three decimal places.
6063	Quantity, Qualifier	M	an..3	Constant value: <b>12 Quantity</b>
4221	Reason for delivery quantity deviation, coded	M	an..3	The following codes are available: <b>AC Excess delivery compared to ordered quantity</b> <b>CP Partial delivery, considered as complete delivery, no follow-up delivery</b>

**Description:** At this point, partial deliveries and excess deliveries are specified.

**Note:** In this segment, the difference between the delivered quantity and the ordered quantity is specified.

**Example:** QVR+9:12+AC'

No = Consecutive segment number  
MaxOcc = Maximum occurrence of the segment/group  
Counter = Counter of segment/group within the standard

St = Status  
EDIFACT: M=Mandatory, C=Conditional  
User specific: R=Required, O=Optional, D=Dependent,  
A=Advised, N=Not used

# Segment descriptions

Number	No	Segment	St	MaxRep.	Level	Name
1040	45	<b>UNT</b>	M	1	0	<b>Message End Segment</b>

Tag	Name	St Format	Usage / Comments
UNT			
0074	NUMBER OF SEGMENTS IN A MESSAGE	M n..6	Number of segments transmitted with this message, including the UNH and UNT segments.
0062	MESSAGE REFERENCE NUMBER	M an..14	The same reference number as in UNH-0062 must be entered here. This number will be compared with the entry in the UNH segment upon receipt of the message.

**Description:** In the UNT segment, the number of segments and a message reference number are transmitted for plausibility checking.

**Example:** UNT+43+1 '

No = Consecutive segment number  
MaxOcc = Maximum occurrence of the segment/group  
Counter = Counter of segment/group within the standard

St = Status  
EDIFACT: M=Mandatory, C=Conditional  
User specific: R=Required, O=Optional, D=Dependent,  
A=Advised, N=Not used

# Segment descriptions

Number	No	Segment	St	MaxRep.	Level	Name
0000	46	<b>UNZ</b>	M	1	0	Data Segment End

Tag	Name	St Format	Usage / Comments
UNZ			
0036	DATA EXCHANGE COUNTER	M n..6	Here, the number of messages in the payload frame UNB..UNZ is entered.
0020	DATA EXCHANGE REFERENCE	M an..14	The same reference number as in UNB / 0020 must be entered here. This number is compared with the entry in the UNB segment upon receipt of the payload frame.

**Description:** In the UNZ segment, a data exchange counter and a data exchange reference can be transmitted.

**Example:** UNZ+1+1 '

No = Consecutive segment number  
MaxOcc = Maximum occurrence of the segment/group  
Counter = Counter of segment/group within the standard

St = Status  
EDIFACT: M=Mandatory, C=Conditional  
User specific: R=Required, O=Optional, D=Dependent,  
A=Advised, N=Not used

# Example

No	Desc	Example
01	UNA	UNA+:? '
02	UNB	UNB+UNOC:3+4,01235E?+12:14+4,01235E?+12:14+131014:1154+1+++++1'
03	UNH	UNH+1+DESADV:D:96B:UN:ITEK42'
04	BGM	BGM+351+1'
05	DTM	DTM+137:20141012:102'
06	DTM	DTM+133:20141013:102'
	SG2	
07	NAD	NAD+CA+4,01235E?+12::9++Max:Maximilian:Mustermann+Musterstr. 16+Musterstadt++12345+DE'
	SG3	
08	RFF	RFF+API:12345'
	SG4	
09	CTA	CTA++:Max Mustermann'
10	COM	COM+max_mustermann@e_mail.de:EM'
	SG2	
11	NAD	NAD+ST+4,01235E?+12::9++Max:Maximilian:Mustermann+Musterstr. 16+Musterstadt++12345+DE'
	SG3	
12	RFF	RFF+API:12345'
	SG4	
13	CTA	CTA++:Max Mustermann'
14	COM	COM+max_mustermann@e_mail.de:EM'
	SG2	
15	NAD	NAD+SU+4,01235E?+12::9++Max:Maximilian:Mustermann+Musterstr. 16+Musterstadt++12345+DE'
	SG3	
16	RFF	RFF+XA:AN'
	SG4	
17	CTA	CTA++:Max Mustermann'
18	COM	COM+max_mustermann@e_mail.de:EM'
	SG2	
19	NAD	NAD+WS+4,01235E?+12::9++Max:Maximilian:Mustermann+Musterstr. 16+Musterstadt++12345+DE'
	SG3	
20	RFF	RFF+API:12345'
	SG4	
21	CTA	CTA++:Max Mustermann'
22	COM	COM+max_mustermann@e_mail.de:EM'
	SG2	
23	NAD	NAD+DP+4,01235E?+12::9++Max:Maximilian:Mustermann+Musterstr. 16+Musterstadt++12345+DE'
	SG3	
24	RFF	RFF+API:12345'
	SG4	
25	CTA	CTA++:Max Mustermann'
26	COM	COM+max_mustermann@e_mail.de:EM'
	SG6	
27	TDT	TDT+13+AN37+30+31'
	SG10	
28	CPS	CPS+2+1'
	SG11	

No = Consecutive segment number in the guide

Desc = Object identifier

# Example

No	Desc	Example
29	PAC	PAC+9++PC++:3'
30	MEA	MEA+AAE+AAI+CMK:50'
	SG13	
31	PCI	PCI+33E'
	SG14	
32	GIN	GIN+BJ+11111'
	SG15	
33	LIN	LIN+9++4,01235E?+12:EN'
34	PIA	PIA+1+12345:NB+12345:NB+12345:NB+12345:NB+12345:NB'
35	IMD	IMD+++SP:::Musterartikel Musterartikel Mustera:rtike'
36	IMD	IMD+++ZU:::Musterartikel Musterartikel Mustera:rtike'
37	QTY	QTY+12:9:CMK'
	SG16	
38	RFF	RFF+ON:1:1'
39	DTM	DTM+171:20150323:102'
	SG16	
40	RFF	RFF+AAJ:1:1'
41	DTM	DTM+171:20150323:102'
	SG23	
42	QVR	QVR+9:12+BP'
43	DTM	DTM+58E:20141014:102'
	SG23	
44	QVR	QVR+9:12+AC'
45	UNT	UNT+43+1'
46	UNZ	UNZ+1+1'

No = Consecutive segment number in the guide

Desc = Object identifier